

For Research Use Only

# CD23 Recombinant antibody, PBS Only (Detector)

Catalog Number: 84024-2-PBS



## Basic Information

|                                       |  |   |
|---------------------------------------|--|---|
| <b>Catalog Number:</b><br>84024-2-PBS | <b>GenBank Accession Number:</b><br>BC064417                                     | <b>Purification Method:</b><br>Protein A purification |
| <b>Size:</b><br>1 mg/ml               | <b>GeneID (NCBI):</b><br>2208  | <b>CloneNo.:</b><br>241269B10                         |
| <b>Source:</b><br>Rabbit              | <b>UNIPROT ID:</b><br>P06734   |   |
| <b>Isotype:</b><br>IgG                | <b>Full Name:</b><br>Fc fragment of IgE, low affinity II,<br>receptor for (CD23) |   |
|                                       | <b>Calculated MW:</b><br>321 aa, 36 kDa  |   |
|                                       | <b>Observed MW:</b><br>36 kDa  |   |

## Applications

**Tested Applications:**  
WB, IHC, Cytometric bead array, Indirect ELISA

**Species Specificity:**  
human, mouse

## Background Information

CD23, also known as low-affinity immunoglobulin epsilon Fc receptor, is a transmembrane glycoprotein present on a subpopulation of B lymphocytes in germinal centers, EBV-transformed B-lymphoblastoid cell lines, follicular dendritic cells, and a subpopulation of peripheral blood cells. CD23 has essential roles in the regulation of IgE production and in the differentiation of B-cells

## Storage

**Storage:**  
Store at -80°C.  
**The product is shipped with ice packs. Upon receipt, store it immediately at -80°C**

**Storage Buffer:**  
PBS Only

For technical support and original validation data for this product please contact:

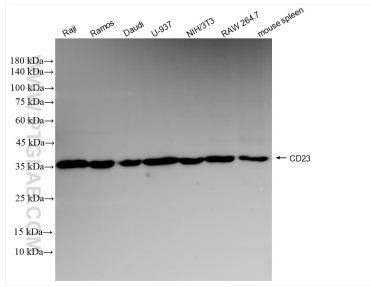
T: 4006900926

E: Proteintech-CN@ptglab.com

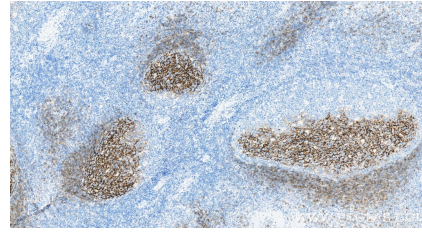
W: ptgcn.com

**This product is exclusively available under Proteintech Group brand and is not available to purchase from any other manufacturer.**

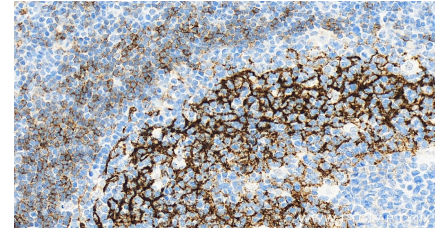
## Selected Validation Data



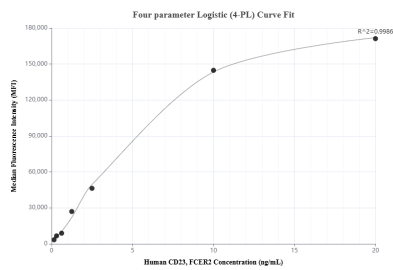
Various lysates were subjected to SDS PAGE followed by western blot with 84024-2-RR (CD23, FCER2 antibody) at dilution of 1:10000 incubated at room temperature for 1.5 hours. This data was developed using the same antibody clone with 84024-2-PBS in a different storage buffer formulation.



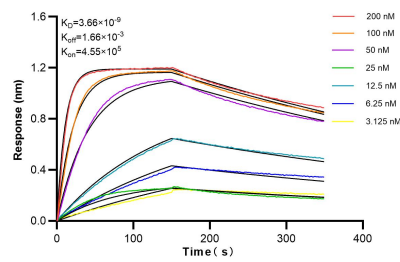
Immunohistochemical analysis of paraffin-embedded human tonsillitis tissue slide using 84024-2-RR (CD23 antibody) at dilution of 1:1000 (under 10x lens). Heat mediated antigen retrieval with Tris-EDTA buffer (pH 9.0). This data was developed using the same antibody clone with 84024-2-PBS in a different storage buffer formulation.



Immunohistochemical analysis of paraffin-embedded human tonsillitis tissue slide using 84024-2-RR (CD23 antibody) at dilution of 1:1000 (under 40x lens). Heat mediated antigen retrieval with Tris-EDTA buffer (pH 9.0). This data was developed using the same antibody clone with 84024-2-PBS in a different storage buffer formulation.



Cytometric bead array standard curve of MP00958-1, CD23 Recombinant Matched Antibody Pair, PBS Only. Capture antibody: 84024-1-PBS. Detection antibody: 84024-2-PBS. Standard: RP02343. Range: 0.156-20 ng/mL.



Biolayer interferometry (BLI) kinetic assays of 83996-4-RR against Human CD23 were performed. The affinity constant is 3.66 nM.