

For Research Use Only

CD23 Recombinant antibody, PBS Only (Capture/Detector)

Catalog Number: 84024-3-PBS



Basic Information

Catalog Number:

84024-3-PBS

Size:

1 mg/ml

Source:

Rabbit

Isotype:

IgG

GenBank Accession Number:

BC064417

GeneID (NCBI):

2208

UNIPROT ID:

P06734

Full Name:

Fc fragment of IgE, low affinity II,
receptor for (CD23)

Calculated MW:

321 aa, 36 kDa

Purification Method:

Protein A purification

CloneNo.:

241269C8

Applications

Tested Applications:

Cytometric bead array, Sandwich ELISA, Indirect ELISA,
Sample test

Species Specificity:

human

Background Information

Storage

Storage:

Store at -80°C.

The product is shipped with ice packs. Upon receipt, store it immediately at -80°C

Storage Buffer:

PBS Only

For technical support and original validation data for this product please contact:

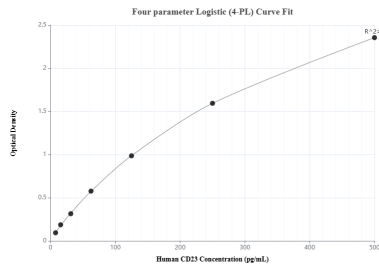
T: 4006900926

E: Proteintech-CN@ptglab.com

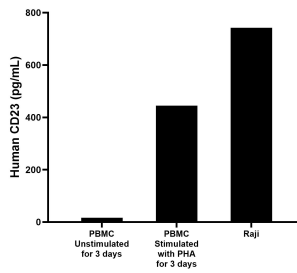
W: ptgcn.com

This product is exclusively available under Proteintech Group brand and is not available to purchase from any other manufacturer.

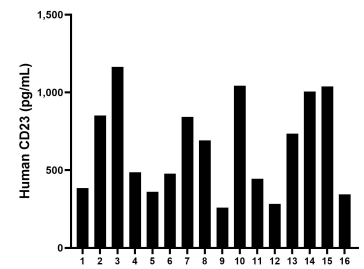
Selected Validation Data



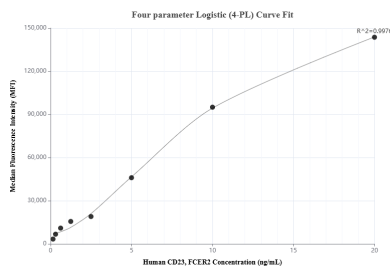
Sandwich ELISA standard curve of MP00958-3, Human CD23 Recombinant Matched Antibody Pair - PBS only. 84024-3-PBS was coated to a plate as the capture antibody and incubated with serial dilutions of standard RP02343. 84024-1-PBS was HRP conjugated as the detection antibody. Range: 7.81-500 pg/mL



Human peripheral blood mononuclear cells (PBMC) were cultured unstimulated or stimulated with 10 μ g/mL PHA for 3 days. The mean CD23 concentration was determined to be 16.3 pg/mL in unstimulated PBMC supernatant, 444.73 pg/mL in PHA stimulated PBMC supernatant. Raji human Burkitt's lymphoma cells were cultured in RPMI supplemented with 10% fetal bovine serum, 2mM L-glutamine, 100 U/mL penicillin, and 100 μ g/mL streptomycin sulfate. The



Serum of sixteen individual healthy human donors was measured. The human CD23 concentration of detected samples was determined to be 651.0 pg/mL with a range of 259.5 - 1,165.0 pg/mL.



Cytometric bead array standard curve of MP00958-2, CD23 Recombinant Matched Antibody Pair, PBS Only. Capture antibody: 84024-1-PBS. Detection antibody: 84024-3-PBS. Standard: RP02343. Range: 0.156-20 ng/mL