

For Research Use Only

# Siglec-8 Recombinant monoclonal antibody, PBS Only (Detector)

Catalog Number: 84026-1-PBS



## Basic Information

Catalog Number:

84026-1-PBS

Source:

Rabbit

Isotype:

IgG

GenBank Accession Number:

BC053319

GeneID (NCBI):

27181

UNIPROT ID:

Q9NYZ4

Full Name:

sialic acid binding Ig-like lectin 8

Calculated MW:

499 aa, 54 kDa

Purification Method:

Protein A purification

CloneNo.:

241275D7

## Applications

Tested Applications:

Sandwich ELISA, Indirect ELISA

Species Specificity:

human

## Background Information

### Storage

Storage:

Store at -80°C.

The product is shipped with ice packs. Upon receipt, store it immediately at -80°C

Storage Buffer:

PBS only, pH7.3

For technical support and original validation data for this product please contact:

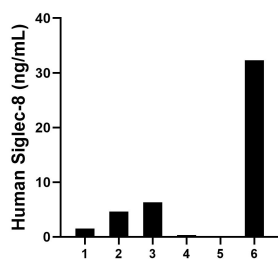
T: 4006900926

E: [Proteintech-CN@ptglab.com](mailto:Proteintech-CN@ptglab.com)

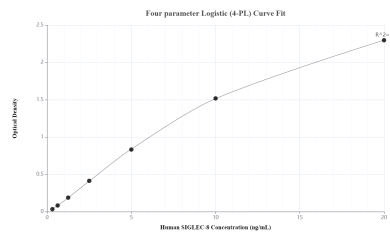
W: [ptgcn.com](http://ptgcn.com)

This product is exclusively available under Proteintech Group brand and is not available to purchase from any other manufacturer.

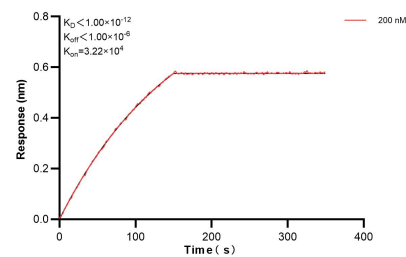
## Selected Validation Data



Serum of six individual healthy human donors was measured. The Siglec-8 concentration of detected samples was determined to be 7.56 ng/mL with a range of 0.19-32.32 ng/mL.



Sandwich ELISA standard curve of MP00960-4, Human Siglec-8 Recombinant Matched Antibody Pair - PBS only. 84026-2-PBS was coated to a plate as the capture antibody and incubated with serial dilutions of standard RP02311. 84026-1-PBS was HRP conjugated as the detection antibody. Range: 0.313-20 ng/mL.



Biolayer interferometry (BLI) kinetic assay of 84026-1-PBS against Human Siglec-8 was performed. The affinity constant is below 1 pM.