

For Research Use Only

# TMPPE Recombinant antibody

Catalog Number: 84028-2-RR



## Basic Information

Catalog Number:

84028-2-RR

Size:

1000 µg/ml

Source:

Rabbit

Isotype:

IgG

Immunogen Catalog Number:

AG19556

GenBank Accession Number:

BC136873

GeneID (NCBI):

643853

UNIPROT ID:

Q6ZT21

Full Name:

transmembrane protein with metallophosphoesterase domain

Calculated MW:

453 aa, 49 kDa

Observed MW:

45-50 kDa

Purification Method:

Protein A purification

CloneNo.:

241180C8

Recommended Dilutions:

WB 1:2000-1:10000

## Applications

Tested Applications:

WB, ELISA

Species Specificity:

human

Positive Controls:

WB : HepG2 cells, HeLa cells, HEK-293T cells, U-251 cells

## Background Information

### Storage

Storage:

Store at -20°C. Stable for one year after shipment.

Storage Buffer:

PBS with 0.02% sodium azide and 50% glycerol pH 7.3.

Aliquoting is unnecessary for -20°C storage

For technical support and original validation data for this product please contact:

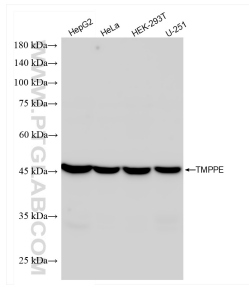
T: 4006900926

E: [Proteintech-CN@ptglab.com](mailto:Proteintech-CN@ptglab.com)

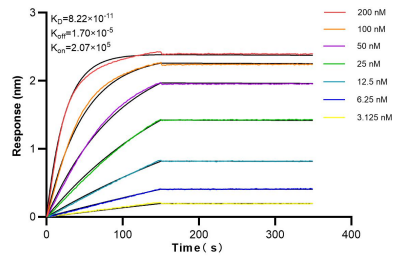
W: [ptgcn.com](http://ptgcn.com)

This product is exclusively available under Proteintech Group brand and is not available to purchase from any other manufacturer.

## Selected Validation Data



Various lysates were subjected to SDS PAGE followed by western blot with 84028-2-RR (TMPPE antibody) at dilution of 1:5000 incubated at room temperature for 1.5 hours.



Biolayer interferometry (BLI) kinetic assays of 84028-2-RR against Human TMPPE were performed. The affinity constant is 82.2 pM.