

For Research Use Only

# PEG3 Recombinant antibody, PBS Only (Capture)

Catalog Number: 84030-2-PBS



## Basic Information

<b>Catalog Number:</b> 84030-2-PBS	<b>GenBank Accession Number:</b> BC150272	<b>Purification Method:</b> Protein A purification
<b>Size:</b> 1 mg/ml	<b>GeneID (NCBI):</b> 5178	<b>CloneNo.:</b> 241234D2
<b>Source:</b> Rabbit	<b>UNIPROT ID:</b> Q9GZU2	
<b>Isotype:</b> IgG	<b>Full Name:</b> paternally expressed 3	
<b>Immunogen Catalog Number:</b> AG20132	<b>Calculated MW:</b> 1588 aa, 181 kDa	

## Applications

**Tested Applications:**  
Cytometric bead array, Sandwich ELISA, Indirect ELISA,  
Sample test

**Species Specificity:**  
human

## Background Information

### Storage

**Storage:**  
Store at -80°C.  
**The product is shipped with ice packs. Upon receipt, store it immediately at -80°C**

**Storage Buffer:**  
PBS Only

For technical support and original validation data for this product please contact:

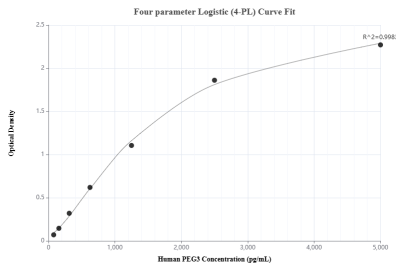
T: 4006900926

E: [Proteintech-CN@ptglab.com](mailto:Proteintech-CN@ptglab.com)

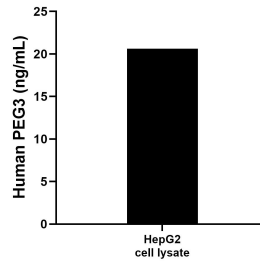
W: [ptgcn.com](http://ptgcn.com)

**This product is exclusively available under Proteintech Group brand and is not available to purchase from any other manufacturer.**

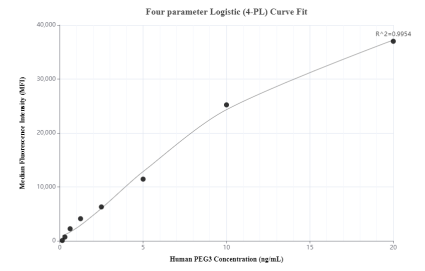
## Selected Validation Data



Sandwich ELISA standard curve of MP00940-1, Human PEG3 Recombinant Matched Antibody Pair - PBS only. 84030-2-PBS was coated to a plate as the capture antibody and incubated with serial dilutions of standard Ag20132. 84030-3-PBS was HRP conjugated as the detection antibody. Range: 78.1-5000 pg/mL



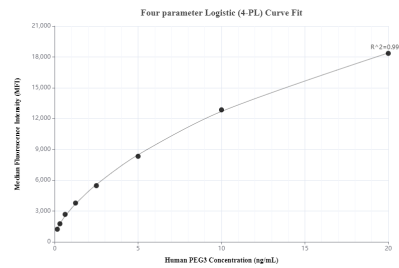
HepG2 cell lysate was measured. The human PEG3 concentration of detected samples was determined to be 20.63 ng/mL (based on a 5.0 mg/mL extract load).



Cytometric bead array standard curve of MP00940-1, PEG3 Recombinant Matched Antibody Pair, PBS Only. Capture antibody: 84030-2-PBS. Detection antibody: 84030-3-PBS. Standard: Ag20132. Range: 0.156-20 ng/mL



Cytometric bead array standard curve of MP00940-2, PEG3 Recombinant Matched Antibody Pair, PBS Only. Capture antibody: 84030-2-PBS. Detection antibody: 84030-4-PBS. Standard: null. Range: null.



Cytometric bead array standard curve of MP00940-2, PEG3 Recombinant Matched Antibody Pair, PBS Only. Capture antibody: 84030-2-PBS. Detection antibody: 84030-4-PBS. Standard: Ag20132. Range: 0.156-20 ng/mL