

For Research Use Only

PEG3 Recombinant antibody, PBS Only (Detector)

Catalog Number: 84030-3-PBS



Basic Information

Catalog Number: 84030-3-PBS	GenBank Accession Number: BC150272	Purification Method: Protein A purification
Size: 1 mg/ml	GeneID (NCBI): 5178	CloneNo.: 241234F2
Source: Rabbit	UNIPROT ID: Q9GZU2	
Isotype: IgG	Full Name: paternally expressed 3	
Immunogen Catalog Number: AG20132	Calculated MW: 1588 aa, 181 kDa	

Applications

Tested Applications:
Cytometric bead array, Sandwich ELISA, Indirect ELISA,
Sample test

Species Specificity:
human

Background Information

Storage

Storage:
Store at -80°C.
The product is shipped with ice packs. Upon receipt, store it immediately at -80°C

Storage Buffer:
PBS Only

For technical support and original validation data for this product please contact:

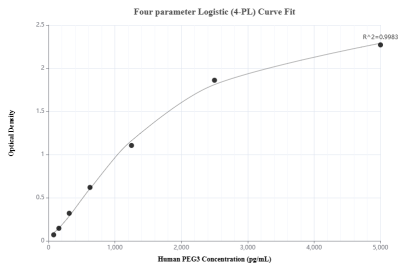
T: 4006900926

E: Proteintech-CN@ptglab.com

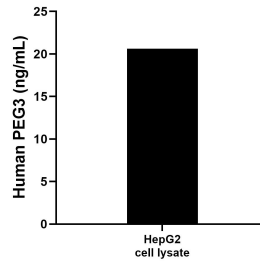
W: ptgcn.com

This product is exclusively available under Proteintech Group brand and is not available to purchase from any other manufacturer.

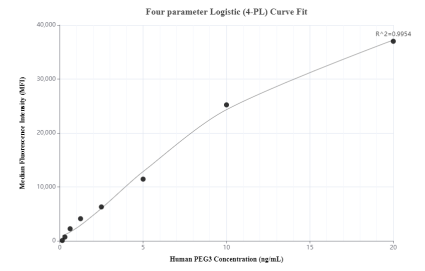
Selected Validation Data



Sandwich ELISA standard curve of MP00940-1, Human PEG3 Recombinant Matched Antibody Pair - PBS only. 84030-2-PBS was coated to a plate as the capture antibody and incubated with serial dilutions of standard Ag20132. 84030-3-PBS was HRP conjugated as the detection antibody. Range: 78.1-5000 pg/mL



HepG2 cell lysate was measured. The human PEG3 concentration of detected samples was determined to be 20.63 ng/mL (based on a 5.0 mg/mL extract load).



Cytometric bead array standard curve of MP00940-1, PEG3 Recombinant Matched Antibody Pair, PBS Only. Capture antibody: 84030-2-PBS. Detection antibody: 84030-3-PBS. Standard: Ag20132. Range: 0.156-20 ng/mL