

For Research Use Only

ATOH1 Recombinant antibody, PBS Only (Capture)

Catalog Number: 84037-4-PBS



Basic Information

Catalog Number: 84037-4-PBS	GenBank Accession Number: BC069594	Purification Method: Protein A purification
Concentration: 1 mg/ml	GeneID (NCBI): 474	CloneNo.: 240593B10
Source: Rabbit	UNIPROT ID: Q92858	
Isotype: IgG	Full Name: atonal homolog 1 (Drosophila)	
Immunogen Catalog Number: AG15615	Calculated MW: 354 aa, 38 kDa	

Applications

Tested Applications:
Sandwich ELISA, Indirect ELISA, Sample test

Species Specificity:
human

Background Information

Storage

Storage:
Store at -80°C.
The product is shipped with ice packs. Upon receipt, store it immediately at -80°C

Storage Buffer:
PBS Only

For technical support and original validation data for this product please contact:

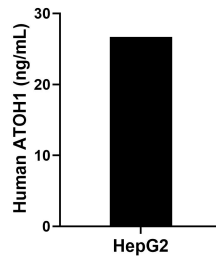
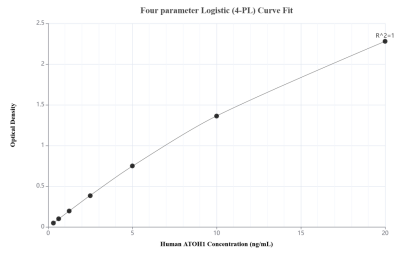
T: 4006900926

E: Proteintech-CN@ptglab.com

W: ptgcn.com

This product is exclusively available under Proteintech Group brand and is not available to purchase from any other manufacturer.

Selected Validation Data



Sandwich ELISA standard curve of MP00948-3, Human ATOH1 Recombinant Matched Antibody Pair - PBS only. 84037-4-PBS was coated to a plate as the capture antibody and incubated with serial dilutions of standard Ag15615. 84037-2-PBS was HRP conjugated as the detection antibody. Range: 0.313-20 ng/mL

The mean ATOH1 concentration was determined to be 26.69 ng/mL in HepG2 cell extract based on a 1.00 mg/mL extract load.