

For Research Use Only

# PARP14 Recombinant antibody, PBS Only (Detector)

Catalog Number:84039-1-PBS



## Basic Information

<b>Catalog Number:</b> 84039-1-PBS	<b>GenBank Accession Number:</b> NM_017554	<b>Purification Method:</b> Protein A purification
<b>Size:</b> 1 mg/ml	<b>GeneID (NCBI):</b> 54625	<b>CloneNo.:</b> 241078B2
<b>Source:</b> Rabbit	<b>UNIPROT ID:</b> Q460N5	
<b>Isotype:</b> IgG	<b>Full Name:</b> poly (ADP-ribose) polymerase family, member 14	
<b>Immunogen Catalog Number:</b> AG35007	<b>Calculated MW:</b> 203kd	

## Applications

**Tested Applications:**  
Cytometric bead array, Sandwich ELISA, Indirect ELISA, Sample test

**Species Specificity:**  
human

## Background Information

### Storage

**Storage:**  
Store at -80°C.  
**The product is shipped with ice packs. Upon receipt, store it immediately at -80°C**

**Storage Buffer:**  
PBS Only

For technical support and original validation data for this product please contact:

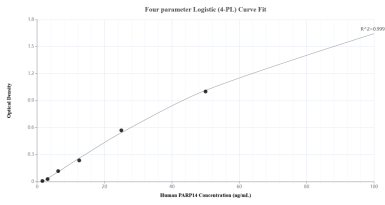
T: 4006900926

E: [Proteintech-CN@ptglab.com](mailto:Proteintech-CN@ptglab.com)

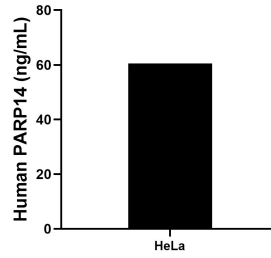
W: [ptgcn.com](http://ptgcn.com)

**This product is exclusively available under Proteintech Group brand and is not available to purchase from any other manufacturer.**

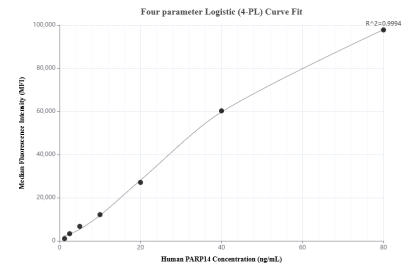
## Selected Validation Data



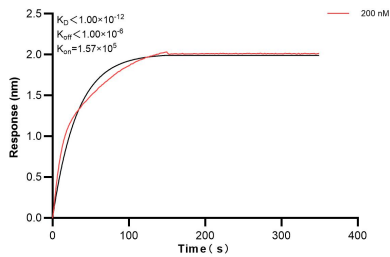
Sandwich ELISA standard curve of MP00966-3, Human PARP14 Recombinant Matched Antibody Pair - PBS only. 84039-5-PBS was coated to a plate as the capture antibody and incubated with serial dilutions of standard Ag35007. 84039-1-PBS was HRP conjugated as the detection antibody. Range: 1.56-100 ng/mL.



The mean PARP14 concentration was determined to be 60.54 ng/mL in HeLa cell extract based on a 1.00 mg/mL extract load.



Cytometric bead array standard curve of MP00966-2, PARP14 Recombinant Matched Antibody Pair, PBS Only. Capture antibody: 84039-3-PBS. Detection antibody: 84039-1-PBS. Standard: Ag35007. Range: 1.25-80 ng/mL.



Bi-layer interferometry (BLI) kinetic assay of 84039-1-PBS against Human PARP14 was performed. The affinity constant is below 1 pM.