

For Research Use Only

Mouse CD98/SLC3A2 Recombinant antibody, PBS Only (Detector)

Catalog Number: 84040-4-PBS



Basic Information

Catalog Number:

84040-4-PBS

Size:

1 mg/ml

Source:

Rabbit

Isotype:

IgG

GenBank Accession Number:

NM_008577.4

GeneID (NCBI):

17254

UNIPROT ID:

P10852-1

Full Name:

solute carrier family 3 (activators of dibasic and neutral amino acid transport), member 2

Calculated MW:

58 kDa

Purification Method:

Protein A purification

CloneNo.:

241247F2

Applications

Tested Applications:

Cytometric bead array, Sandwich ELISA, Indirect ELISA, Sample test

Species Specificity:

mouse

Background Information

Storage

Storage:

Store at -80°C.

The product is shipped with ice packs. Upon receipt, store it immediately at -80°C

Storage Buffer:

PBS Only

For technical support and original validation data for this product please contact:

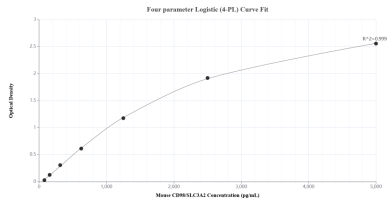
T: 4006900926

E: Proteintech-CN@ptglab.com

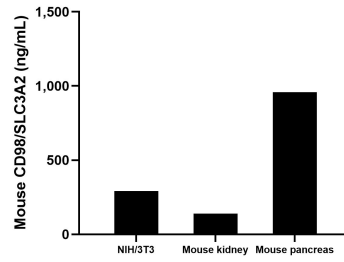
W: ptgcn.com

This product is exclusively available under Proteintech Group brand and is not available to purchase from any other manufacturer.

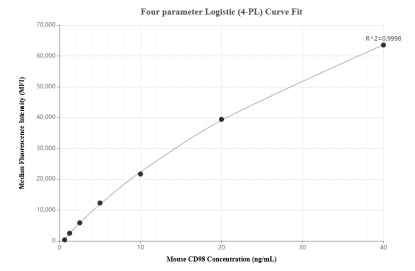
Selected Validation Data



Sandwich ELISA standard curve of MP00969-1, Mouse CD98/SLC3A2 Recombinant Matched Antibody Pair - PBS only. 84040-2-PBS was coated to a plate as the capture antibody and incubated with serial dilutions of standard Eg1374. 84040-4-PBS was HRP conjugated as the detection antibody. Range: 78.1-5000 pg/mL



The mean CD98/SLC3A2 concentration was determined to be 291.1 ng/mL in NIH/3T3 cell extract based on a 4.0 mg/mL extract load, 140.2 ng/mL in mouse kidney cell extract based on a 3.1 mg/mL extract load and 958.6 ng/mL in mouse pancreas cell extract based on a 2.3 mg/mL extract load.



Cytometric bead array standard curve of MP00969-1, MOUSE CD98/SLC3A2 Recombinant Matched Antibody Pair, PBS Only. Capture antibody: 84040-2-PBS. Detection antibody: 84040-4-PBS. Standard: Eg1374. Range: 0.625-40 ng/mL