

For Research Use Only

# HER2/ErbB2,p185-Specific Recombinant antibody

Catalog Number:84046-1-RR



## Basic Information

<b>Catalog Number:</b> 84046-1-RR	<b>GenBank Accession Number:</b> BC167147	<b>Purification Method:</b> Protein A purification
<b>Size:</b> 500 ug/ml	<b>GeneID (NCBI):</b> 2064	<b>CloneNo.:</b> 240802C2
<b>Source:</b> Rabbit	<b>UNIPROT ID:</b> P04626	<b>Recommended Dilutions:</b> WB 1:2000-1:10000 IHC 1:50-1:500
<b>Isotype:</b> IgG	<b>Full Name:</b> v-erb-b2 erythroblastic leukemia viral oncogene homolog 2, neuro/glioblastoma derived oncogene homolog (avian)	
	<b>Calculated MW:</b> 138 kDa	
	<b>Observed MW:</b> 185 kDa	

## Applications

### Tested Applications:

WB, IHC, ELISA

### Species Specificity:

human, mouse

**Note-IHC: suggested antigen retrieval with TE buffer pH 9.0; (\*) Alternatively, antigen retrieval may be performed with citrate buffer pH 6.0**

### Positive Controls:

**WB :** HeLa cells, NCI-H1299 cells, MCF-7 cells, A549 cells, 4T1 cells, SGC-7901 cells

**IHC :** mouse uterus tissue,

## Background Information

HER2, also known as ErbB2 and Neu, is a 185-kDa transmembrane glycoprotein member of the epidermal growth factor (EGF) receptor family of receptor tyrosine kinases. It has no ligand-binding domain and therefore cannot bind growth factors. However, it does bind tightly to other ligand-bound EGF receptor family members to form a heterodimer, stabilizing ligand binding and enhancing kinase-mediated activation of downstream signaling pathways, such as those involving mitogen-activated protein kinase and phosphatidylinositol-3 kinase. Amplification and overexpression of HER2 have been reported in numerous cancers, including breast and ovarian tumors. HER2 is a therapeutic target for the treatment of breast cancer and other carcinomas.

## Storage

### Storage:

Store at -20°C. Stable for one year after shipment.

### Storage Buffer:

PBS with 0.02% sodium azide and 50% glycerol pH 7.3.

Aliquoting is unnecessary for -20°C storage

For technical support and original validation data for this product please contact:

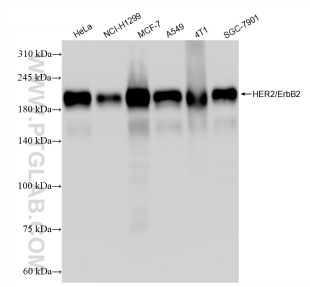
T: 4006900926

E: Proteintech-CN@ptglab.com

W: ptgcn.com

**This product is exclusively available under Proteintech Group brand and is not available to purchase from any other manufacturer.**

## Selected Validation Data



Various lysates were subjected to SDS PAGE followed by western blot with 84046-1-RR (ERBB2,p185-Specific antibody) at dilution of 1:5000 incubated at room temperature for 1.5 hours.



Immunohistochemical analysis of paraffin-embedded mouse uterus tissue slide using 84046-1-RR (HER2/ErbB2,p185-Specific antibody) at dilution of 1:200 (under 10x lens). Heat mediated antigen retrieval with Tris-EDTA buffer (pH 9.0).