

For Research Use Only

# RREB1-Specific Recombinant antibody

Catalog Number: 84048-1-RR



## Basic Information

<b>Catalog Number:</b> 84048-1-RR	<b>GenBank Accession Number:</b> NM_001003698	<b>Purification Method:</b> Protein A purification
<b>Size:</b> 1000 µg/ml	<b>GeneID (NCBI):</b> 6239	<b>CloneNo.:</b> 240800B7
<b>Source:</b> Rabbit	<b>UNIPROT ID:</b> Q92766	<b>Recommended Dilutions:</b> WB 1:500-1:2000 IF/ICC 1:200-1:800
<b>Isotype:</b> IgG	<b>Full Name:</b> ras responsive element binding protein 1	
	<b>Calculated MW:</b> 181 kDa	
	<b>Observed MW:</b> 260 kDa	

## Applications

<b>Tested Applications:</b> WB, IF/ICC, FC (Intra), ELISA	<b>Positive Controls:</b> WB : K-562 cells, HEK-293 cells, Jurkat cells
<b>Species Specificity:</b> human	<b>IF/ICC :</b> HeLa cells,

## Background Information

RREB1, also named as FINB and Zep-1, belongs to the krueppel C2H2-type zinc-finger protein family. RREB1 is a transcription factor that binds specifically to the RAS-responsive elements (RRE) of gene promoters. It may be involved in Ras/Raf-mediated cell differentiation by enhancing calcitonin expression. RREB1 represses the angiotensinogen gene. RREB1 can induce expression of p53 and repress p16 which associated with the expression of tumour. It has been reported that the RREB1 can be a candidate gene for type 2 diabetes associated end-stage kidney disease. To some extent, the decrease of zinc in human pancreatic adenocarcinoma is associated with the downregulation of RREB1. RREB1 has some isoforms with 250 kDa, 180-200 kDa and 140-160 kDa protein. (PMID: 21703425, 15067362, 25050557, 25027322)

## Storage

**Storage:**  
Store at -20°C. Stable for one year after shipment.  
**Storage Buffer:**  
PBS with 0.02% sodium azide and 50% glycerol pH 7.3.  
Aliquoting is unnecessary for -20°C storage

For technical support and original validation data for this product please contact:

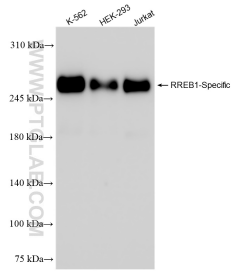
T: 4006900926

E: [Proteintech-CN@ptglab.com](mailto:Proteintech-CN@ptglab.com)

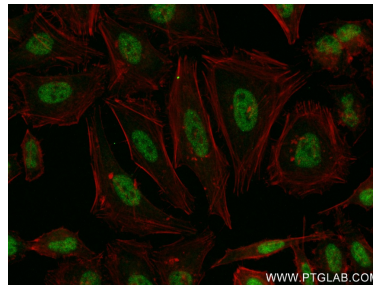
W: [ptgcn.com](http://ptgcn.com)

**This product is exclusively available under Proteintech Group brand and is not available to purchase from any other manufacturer.**

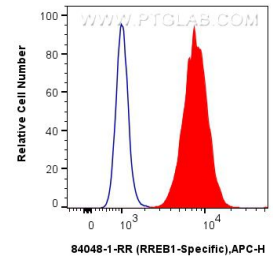
## Selected Validation Data



Various lysates were subjected to SDS PAGE followed by western blot with 84048-1-RR (RREB1-Specific antibody) at dilution of 1:1000 incubated at room temperature for 1.5 hours.



Immunofluorescent analysis of (4% PFA) fixed HeLa cells using RREB1-Specific antibody (84048-1-RR, Clone: 240800B7) at dilution of 1:400 and CoraLite®488-Conjugated AffiniPure Goat Anti-Rabbit IgG(H+L) (SA00013-2), CL594-Phalloidin (red).



$1 \times 10^6$  U-2 OS were intracellularly stained with 0.25  $\mu$ g RREB1-Specific Recombinant antibody (84048-1-RR, Clone:240800B7) and APC-Conjugated AffiniPure Goat Anti-Rabbit IgG(H+L) (red), or 0.25  $\mu$ g Isotype Control (blue). Cells were fixed and permeabilized with True-Nuclear Transcription Factor Buffer Set.