

For Research Use Only

RNF40 Recombinant antibody, PBS Only (Detector)

Catalog Number: 84058-3-PBS



Basic Information

Catalog Number: 84058-3-PBS	GenBank Accession Number: BC006133	Purification Method: Protein A purification
Size: 1 mg/ml	GeneID (NCBI): 9810	CloneNo.: 241214E10
Source: Rabbit	UNIPROT ID: O75150	
Isotype: IgG	Full Name: ring finger protein 40	
Immunogen Catalog Number: AG8047	Calculated MW: 114 kDa	

Applications

Tested Applications:
Cytometric bead array, Sandwich ELISA, Indirect ELISA,
Sample test

Species Specificity:
human

Background Information

Storage

Storage:
Store at -80°C.
The product is shipped with ice packs. Upon receipt, store it immediately at -80°C

Storage Buffer:
PBS Only

For technical support and original validation data for this product please contact:

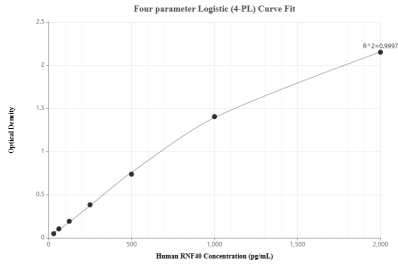
T: 4006900926

E: Proteintech-CN@ptglab.com

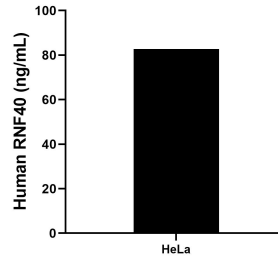
W: ptgcn.com

This product is exclusively available under Proteintech Group brand and is not available to purchase from any other manufacturer.

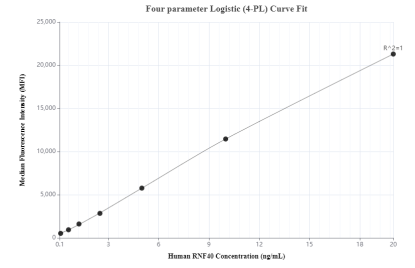
Selected Validation Data



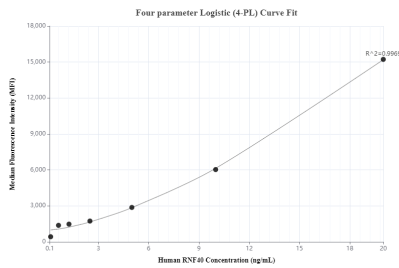
Sandwich ELISA standard curve of MP00974-1, Human RNF40 Recombinant Matched Antibody Pair - PBS only. 84058-1-PBS was coated to a plate as the capture antibody and incubated with serial dilutions of standard Ag8047. 84058-3-PBS was HRP conjugated as the detection antibody. Range: 31.3-2000 pg/mL



The mean RNF40 concentration was determined to be 82.72 ng/mL in HeLa cell extract based on a 2.0 mg/mL extract load.



Cytometric bead array standard curve of MP00974-1, RNF40 Recombinant Matched Antibody Pair, PBS Only. Capture antibody: 84058-1-PBS. Detection antibody: 84058-3-PBS. Standard: Ag8047. Range: 0.156-20 ng/mL



Cytometric bead array standard curve of MP00974-2, RNF40 Recombinant Matched Antibody Pair, PBS Only. Capture antibody: 84058-2-PBS. Detection antibody: 84058-3-PBS. Standard: Ag8047. Range: 0.156-20 ng/mL