

For Research Use Only

# KLK3/PSA Recombinant antibody, PBS Only

Catalog Number:84059-5-PBS



## Basic Information

Catalog Number:

84059-5-PBS

Size:

1 mg/ml

Source:

Rabbit

Isotype:

IgG

GenBank Accession Number:

NM\_001648.2

GeneID (NCBI):

354

UNIPROT ID:

P07288-1

Full Name:

kallikrein-related peptidase 3

Calculated MW:

29 kDa

Observed MW:

30-34 kDa

Purification Method:

Protein A purification

CloneNo.:

241263F8

## Applications

Tested Applications:

WB, IF/ICC, FC (Intra), Indirect ELISA

Species Specificity:

human

## Background Information

Kallikreins are a subgroup of serine proteases having diverse physiological functions. Growing evidence suggests that many kallikreins are implicated in carcinogenesis and some have potential as novel cancer and other disease biomarkers. kallikrein-related peptidase 3, which is also called PSA (prostate-specific antigen) in the clinical setting, is useful in the diagnosis and monitoring of prostatic carcinoma. KLK3 has 5 isoforms produced by alternative splicing.

## Storage

Storage:

Store at -80°C.

**The product is shipped with ice packs. Upon receipt, store it immediately at -80°C**

Storage Buffer:

PBS Only

For technical support and original validation data for this product please contact:

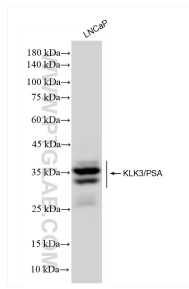
T: 4006900926

E: Proteintech-CN@ptglab.com

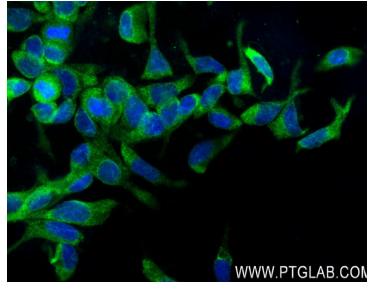
W: ptgcn.com

**This product is exclusively available under Proteintech Group brand and is not available to purchase from any other manufacturer.**

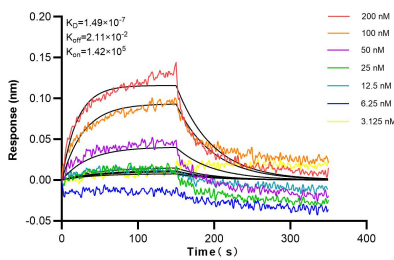
## Selected Validation Data



LNCaP cells were subjected to SDS PAGE followed by western blot with 84059-5-RR (KLK3/PSA antibody) at dilution of 1:10000 incubated at room temperature for 1.5 hours. This data was developed using the same antibody clone with 84059-5-PBS in a different storage buffer formulation.



Immunofluorescent analysis of (4% PFA) fixed LNCaP cells using KLK3/PSA antibody (84059-5-RR, Clone: 241263F8) at dilution of 1:250 and CoraLite®488-Conjugated Goat Anti-Rabbit IgG(H+L) (SA00013-2). This data was developed using the same antibody clone with 84059-5-PBS in a different storage buffer formulation.



Biolayer interferometry (BLI) kinetic assays of 84059-5-RR against Human KLK3/PSA were performed. The affinity constant is 149 nM.

1x10<sup>6</sup> HeLa cells were intracellularly stained with 0.25 ug KLK3/PSA Recombinant antibody (84059-5-RR, Clone:241263F8) and PE-conjugated Goat Anti-Rabbit IgG(red), or 0.25 ug Isotype Control (blue). Cells were fixed and permeabilized with True-Nuclear Transcription Factor Buffer Set. This data was developed using the same antibody clone with 84059-5-PBS in a different storage buffer formulation.