

For Research Use Only

SRP19 Recombinant antibody

Catalog Number:84061-3-RR



Basic Information

Catalog Number: 84061-3-RR	GenBank Accession Number: BC010947	Purification Method: Protein A purification
Size: 1000 µg/ml	GeneID (NCBI): 6728	CloneNo.: 241219E9
Source: Rabbit	UNIPROT ID: P09132	Recommended Dilutions: WB 1:5000-1:50000 IF/ICC 1:125-1:500
Isotype: IgG	Full Name: signal recognition particle 19kDa	
Immunogen Catalog Number: AG8903	Calculated MW: 144 aa, 16 kDa	
	Observed MW: 17 kDa	

Applications

Tested Applications: WB, IF/ICC, ELISA	Positive Controls: WB : HeLa cells, A549 cells, K-562 cells, Raji cells, mouse kidney tissue, mouse ovary tissue, mouse liver tissue
Species Specificity: human, mouse	IF/ICC : HeLa cells,

Background Information

The signal recognition particle (SRP) is one of the few functional small RNP particles. The SRP couples the synthesis of membrane and secretory proteins across or into the endoplasmic reticulum (ER) membrane in eukaryotes, as well as across the bacterial plasma membrane, and chloroplast thylakoid membranes. The mammalian SRP is composed of a 7S (or 7SL) RNA and six different proteins, SRP9, SRP14, SRP19, SRP54, SRP68 and SRP72. All of the components of SRP, including SRP RNA, participate directly in the overall protein targeting process. SRP19 binds directly to 7S RNA and mediates binding of the 54 kDa subunit of the SRP. SRP19 was shown to significantly enhance SRP54 attachment to helix 8 of 7SL RNA.

Storage

Storage:
Store at -20°C. Stable for one year after shipment.
Storage Buffer:
PBS with 0.02% sodium azide and 50% glycerol pH 7.3.
Aliquoting is unnecessary for -20°C storage

For technical support and original validation data for this product please contact:

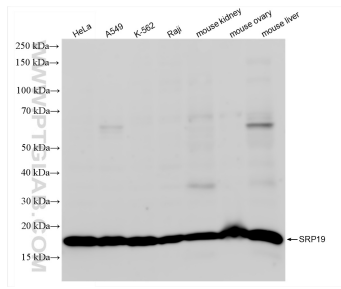
T: 4006900926

E: Proteintech-CN@ptglab.com

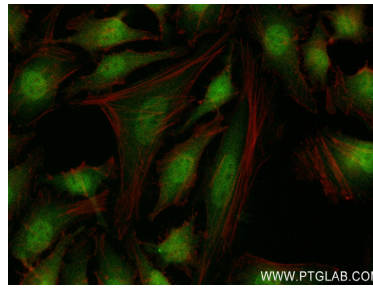
W: ptgcn.com

This product is exclusively available under Proteintech Group brand and is not available to purchase from any other manufacturer.

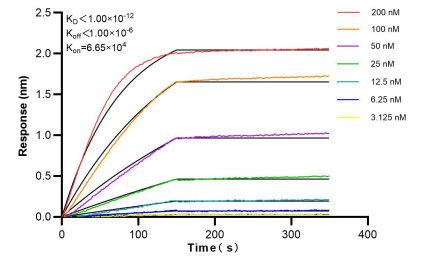
Selected Validation Data



Various lysates were subjected to SDS PAGE followed by western blot with 84061-3-RR (SRP19 antibody) at dilution of 1:10000 incubated at room temperature for 1.5 hours.



Immunofluorescent analysis of (4% PFA) fixed HeLa cells using SRP19 antibody (84061-3-RR, Clone: 241219E9) at dilution of 1:250 and CoraLite® 488-Conjugated AffiniPure Goat Anti-Rabbit IgG(H+L) (SA00013-2), CL594-Phalloidin (red).



Bi-layer interferometry (BLI) kinetic assays of 84061-3-RR against Human SRP19 were performed. The affinity constant is below 1 pM.