

For Research Use Only

LRRK2 Recombinant antibody, PBS Only (Capture)

Catalog Number: 84062-4-PBS



Basic Information

Catalog Number:

84062-4-PBS

Size:

1 mg/ml

Source:

Rabbit

Isotype:

IgG

Immunogen Catalog Number:

AG33713

GenBank Accession Number:

NM_198578

GeneID (NCBI):

120892

UNIPROT ID:

Q5S007

Full Name:

leucine-rich repeat kinase 2

Calculated MW:

286 kDa

Purification Method:

Protein A purification

CloneNo.:

241258E4

Applications

Tested Applications:

Sandwich ELISA, Indirect ELISA, Sample test

Species Specificity:

human

Background Information

Storage

Storage:

Store at -80°C.

The product is shipped with ice packs. Upon receipt, store it immediately at -80°C

Storage Buffer:

PBS Only

For technical support and original validation data for this product please contact:

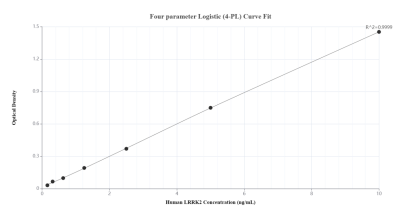
T: 4006900926

E: Proteintech-CN@ptglab.com

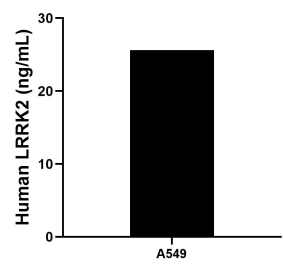
W: ptgcn.com

This product is exclusively available under Proteintech Group brand and is not available to purchase from any other manufacturer.

Selected Validation Data



Sandwich ELISA standard curve of MP00980-2, Human LRRK2 Recombinant Matched Antibody Pair - PBS only. 84062-4-PBS was coated to a plate as the capture antibody and incubated with serial dilutions of standard Ag33713. 84062-5-PBS was HRP conjugated as the detection antibody. Range: 0.156-10 ng/mL.



The mean LRRK2 concentration was determined to be 25.68 ng/mL in A549 cell extract based on a 1.00 mg/mL extract load.