

For Research Use Only

IDO1 Recombinant antibody, PBS Only (Capture)

Catalog Number: 84063-1-PBS



Basic Information

Catalog Number: 84063-1-PBS	GenBank Accession Number: BC027882	Purification Method: Protein A purification
Size: 1 mg/ml	GeneID (NCBI): 3620	CloneNo.: 241110C8
Source: Rabbit	UNIPROT ID: P14902	
Isotype: IgG	Full Name: indoleamine 2,3-dioxygenase 1	
Immunogen Catalog Number: AG3953	Calculated MW: 403 aa, 45 kDa	
	Observed MW: 45 kDa	

Applications

Tested Applications:
WB, FC (Intra), Cytometric bead array, Sandwich ELISA, Indirect ELISA, Sample test

Species Specificity:
human

Background Information

IDO1 is the target for therapy in a range of clinical settings, including cancer, chronic infections, autoimmune and allergic syndromes, and transplantation. Elevated IDO1 expression is a hallmark of major viral infections including HIV, HBV, HCV or influenza and also of major bacteria infections, such as Tb, CAP, listeriosis and sepsis. Pathogens are able to hijack the immunosuppressive effects of IDO1 and make use of them to facilitate their own life cycle. MW of IDO1 is 40-42kd (PMID: 14502282; 17055065).

Storage

Storage:
Store at -80°C.
The product is shipped with ice packs. Upon receipt, store it immediately at -80°C

Storage Buffer:
PBS Only

For technical support and original validation data for this product please contact:

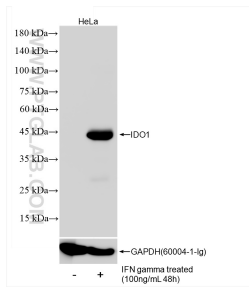
T: 4006900926

E: Proteintech-CN@ptglab.com

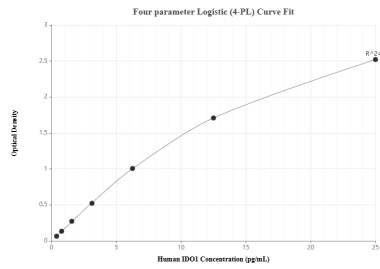
W: ptgcn.com

This product is exclusively available under Proteintech Group brand and is not available to purchase from any other manufacturer.

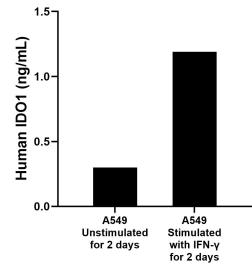
Selected Validation Data



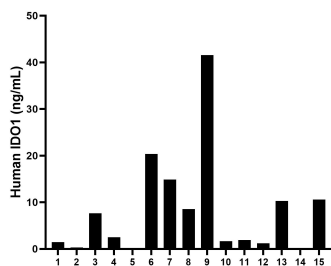
IFN gamma treated HeLa cells were subjected to SDS PAGE followed by western blot with 84063-1-RR (IDO1 antibody) at dilution of 1:4000 incubated at room temperature for 1.5 hours. This data was developed using the same antibody clone with 84063-1-PBS in a different storage buffer formulation.



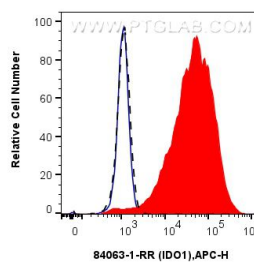
Sandwich ELISA standard curve of MP00982-3, Human IDO1 Recombinant Matched Antibody Pair - PBS only. 84063-1-PBS was coated to a plate as the capture antibody and incubated with serial dilutions of standard Ag3953. 84063-4-PBS was HRP conjugated as the detection antibody. Range: 0.391-25 ng/mL



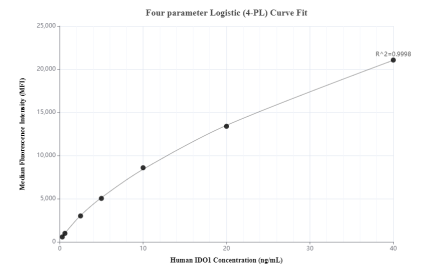
A549 cells were cultured unstimulated or stimulated with 300 µg/mL IFN-gamma for 5 days. The mean IDO1 concentration was determined to be 0.30 ng/mL in unstimulated A549 supernatant, 1.19 ng/mL in IFN-gamma stimulated A549 supernatant.



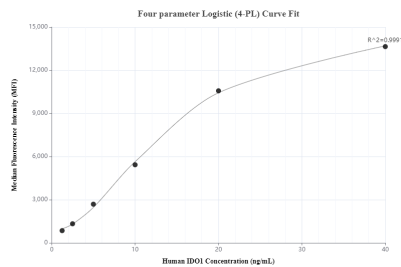
Serum of fifteen individual healthy human donors was measured. The human IDO1 concentration of detected samples was determined to be 8.21 ng/mL with a range of ND - 41.58 ng/mL (ND = Non-detectable)



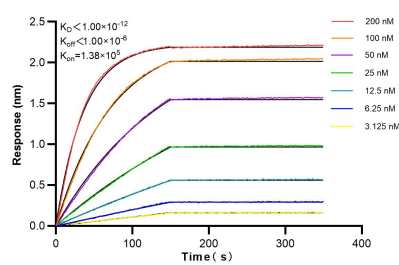
1×10^6 IFN-gamma treated HeLa cells were intracellularly stained with 0.25 µg IDO1 Recombinant Antibody (84063-1-RR, Clone:241110C8) and APC-Conjugated Goat Anti-Rabbit IgG(H+L)(red), or 0.25 µg Isotype Control (blue). Cells were fixed with 4% PFA and permeabilized with Flow Cytometry Perm Buffer (PF00011-C). This data was developed using the same antibody clone with 84063-1-PBS in a different storage buffer formulation.



Cytometric bead array standard curve of MP00982-2, IDO1 Recombinant Matched Antibody Pair, PBS Only. Capture antibody: 84063-1-PBS. Detection antibody: 84063-3-PBS. Standard: Ag3953. Range: 0.313-40 ng/mL



Cytometric bead array standard curve of MP00982-3, IDO1 Recombinant Matched Antibody Pair, PBS Only. Capture antibody: 84063-1-PBS. Detection antibody: 84063-4-PBS. Standard: Ag3953. Range: 1.25-40 ng/mL



Bi-layer interferometry (BLI) kinetic assays of 84063-1-RR against Human IDO1 were performed. The affinity constant is below 1 pM.