

For Research Use Only

# Mouse CD138/Syndecan-1 Recombinant antibody, PBS Only (Capture)

Catalog Number: 84069-3-PBS



## Basic Information

|                                |  |  |
|--------------------------------|--|--|
| Catalog Number:<br>84069-3-PBS | GenBank Accession Number:<br>NM_011519.2 | Purification Method:<br>Protein A purification |
| Size:<br>1 mg/ml               | GeneID (NCBI):<br>20969                  | CloneNo.:<br>241278E7                          |
| Source:<br>Rabbit              | UNIPROT ID:<br>P18828-1                  |  |
| Isotype:<br>IgG                | Full Name:<br>syndecan 1                 |  |
|                                | Calculated MW:<br>33 kDa                 |  |

## Applications

**Tested Applications:**  
Cytometric bead array, Sandwich ELISA, Indirect ELISA,  
Sample test

**Species Specificity:**  
mouse

## Background Information

### Storage

**Storage:**  
Store at -80°C.  
**The product is shipped with ice packs. Upon receipt, store it immediately at -80°C**

**Storage Buffer:**  
PBS Only

For technical support and original validation data for this product please contact:

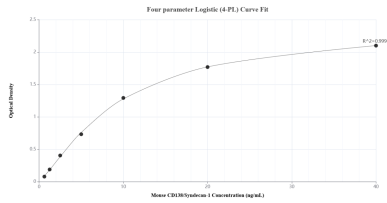
T: 4006900926

E: [Proteintech-CN@ptglab.com](mailto:Proteintech-CN@ptglab.com)

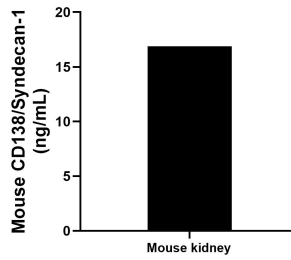
W: [ptgcn.com](http://ptgcn.com)

**This product is exclusively available under Proteintech Group brand and is not available to purchase from any other manufacturer.**

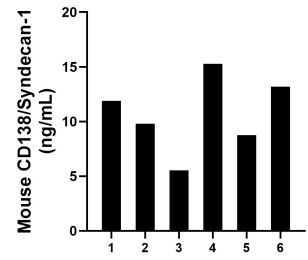
## Selected Validation Data



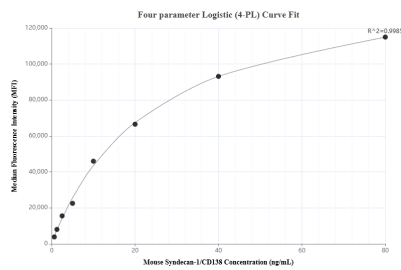
Sandwich ELISA standard curve of MP00990-2, Mouse CD138/Syndecan-1 Recombinant Matched Antibody Pair - PBS only. 84069-3-PBS was coated to a plate as the capture antibody and incubated with serial dilutions of standard Eg1221. 84069-1-PBS was HRP conjugated as the detection antibody. Range: 0.625-40 ng/mL



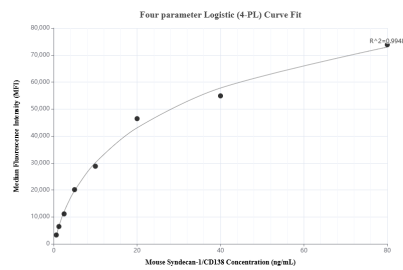
The mean CD138/Syndecan-1 concentration was determined to be 16.88 ng/mL in mouse kidney cell extract based on a 3.10 mg/mL extract load.



Serum of six mice was measured. The CD138/Syndecan-1 concentration of detected samples was determined to be 10.74 ng/mL with a range of 5.54-15.27 ng/mL



Cytometric bead array standard curve of MP00990-1, MOUSE CD138/Syndecan-1 Recombinant Matched Antibody Pair, PBS Only. Capture antibody: 84069-3-PBS. Detection antibody: 84069-5-PBS. Standard: Eg1221. Range: 0.625-80 ng/mL



Cytometric bead array standard curve of MP00990-2, MOUSE CD138/Syndecan-1 Recombinant Matched Antibody Pair, PBS Only. Capture antibody: 84069-3-PBS. Detection antibody: 84069-1-PBS. Standard: Eg1221. Range: 0.625-80 ng/mL