

For Research Use Only

# Leptin Recombinant antibody, PBS Only

Catalog Number: 84072-5-PBS



## Basic Information

Catalog Number:

84072-5-PBS

Size:

1 mg/ml

Source:

Rabbit

Isotype:

IgG

GenBank Accession Number:

BC060830

GeneID (NCBI):

3952

UNIPROT ID:

P41159

Full Name:

Leptin

Calculated MW:

167 aa, 19 kDa

Purification Method:

Protein A purification

CloneNo.:

240720A6

## Applications

Tested Applications:

IF/ICC, FC (Intra), Indirect ELISA

Species Specificity:

human

## Background Information

Leptin is a protein that is secreted by white adipocytes, and which plays a major role in the regulation of body weight. Leptin is the most critical hormone in the homeostatic regulation of energy balance among those so far discovered. Leptin primarily acts on the neurons of the mediobasal part of hypothalamus to regulate food intake, thermogenesis, and the blood glucose level. Leptin also has several endocrine functions, and is involved in the regulation of immune and inflammatory responses, hematopoiesis, angiogenesis and wound healing. Mutations in this gene and/or its regulatory regions cause severe obesity, and morbid obesity with hypogonadism. Leptin has also been linked to type 2 diabetes mellitus development.

## Storage

Storage:

Store at -80°C.

**The product is shipped with ice packs. Upon receipt, store it immediately at -80°C**

Storage Buffer:

PBS Only

For technical support and original validation data for this product please contact:

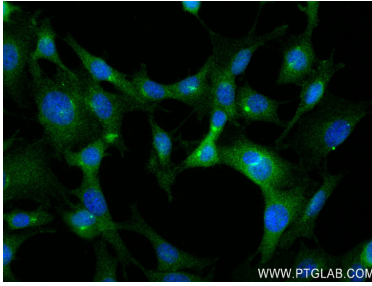
T: 4006900926

E: [Proteintech-CN@ptglab.com](mailto:Proteintech-CN@ptglab.com)

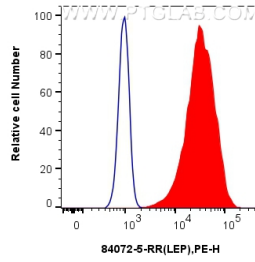
W: [ptgcn.com](http://ptgcn.com)

**This product is exclusively available under Proteintech Group brand and is not available to purchase from any other manufacturer.**

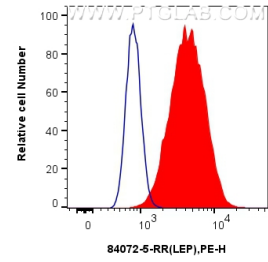
## Selected Validation Data



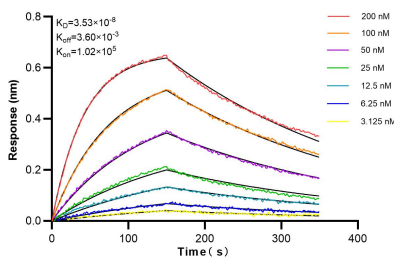
Immunofluorescent analysis of (4% PFA) fixed 3T3-L1 cells using LEP antibody (84072-5-RR, Clone: 240720A6) at dilution of 1:250 and CoraLite®488-Conjugated Goat Anti-Rabbit IgG(H+L) (SA00013-2). This data was developed using the same antibody clone with 84072-5-PBS in a different storage buffer formulation.



1x10<sup>6</sup> HeLa cells were intracellularly stained with 0.25 ug LEP Recombinant antibody (84072-5-RR, Clone:240720A6) and APC-Conjugated Goat Anti-Rabbit IgG(H+L)(red), or 0.25 ug Isotype Control (blue). Cells were fixed with 4% PFA and permeabilized with Flow Cytometry Perm Buffer (PF00011-C). This data was developed using the same antibody clone with 84072-5-PBS in a different storage buffer formulation.



1x10<sup>6</sup> HepG2 cells were intracellularly stained with 0.25 ug LEP Recombinant antibody (84072-5-RR, Clone:240720A6) and APC-Conjugated Goat Anti-Rabbit IgG(H+L)(red), or 0.25 ug Isotype Control (blue). Cells were fixed with 4% PFA and permeabilized with Flow Cytometry Perm Buffer (PF00011-C). This data was developed using the same antibody clone with 84072-5-PBS in a different storage buffer formulation.



Bi-layer interferometry (BLI) kinetic assays of 84072-5-RR against Human LEP were performed. The affinity constant is 35.3 nM.