

For Research Use Only

# CD36 Recombinant antibody, PBS Only (Detector)

Catalog Number: 84078-5-PBS



## Basic Information

<b>Catalog Number:</b> 84078-5-PBS	<b>GenBank Accession Number:</b> NM_001001548.3	<b>Purification Method:</b> Protein A purification
<b>Size:</b> 1 mg/ml	<b>GeneID (NCBI):</b> 948	<b>CloneNo.:</b> 241262C5
<b>Source:</b> Rabbit	<b>UNIPROT ID:</b> P16671-1	
<b>Isotype:</b> IgG	<b>Full Name:</b> CD36 molecule (thrombospondin receptor)	
	<b>Calculated MW:</b> 53 kDa	

## Applications

**Tested Applications:**  
Sandwich ELISA, Indirect ELISA, Sample test

**Species Specificity:**  
human

## Background Information

### Storage

**Storage:**  
Store at -80°C.  
**The product is shipped with ice packs. Upon receipt, store it immediately at -80°C**

**Storage Buffer:**  
PBS Only

For technical support and original validation data for this product please contact:

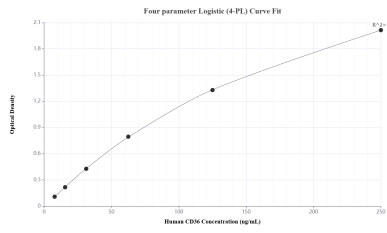
T: 4006900926

E: Proteintech-CN@ptglab.com

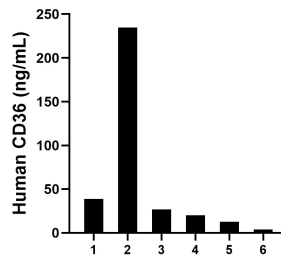
W: ptgcn.com

**This product is exclusively available under Proteintech Group brand and is not available to purchase from any other manufacturer.**

## Selected Validation Data



Sandwich ELISA standard curve of MP00992-4, Human CD36 Recombinant Matched Antibody Pair - PBS only. 84078-3-PBS was coated to a plate as the capture antibody and incubated with serial dilutions of standard Eg1070. 84078-5-PBS was HRP conjugated as the detection antibody. Range: 7.81-250 ng/mL.



Serum of six individual healthy human donors was measured. The CD36 concentration of detected samples was determined to be 80.10 ng/mL with a range of 3.74-234.72 ng/mL.