

For Research Use Only

# SLC17A6 Recombinant antibody, PBS Only (Capture)



Catalog Number: 84083-1-PBS

## Basic Information

<b>Catalog Number:</b> 84083-1-PBS	<b>GenBank Accession Number:</b> NM_020346	<b>Purification Method:</b> Protein A purification
<b>Size:</b> 1 mg/ml	<b>GeneID (NCBI):</b> 57084	<b>CloneNo.:</b> 241255A2
<b>Source:</b> Rabbit	<b>UNIPROT ID:</b> Q9P2U8	
<b>Isotype:</b> IgG	<b>Full Name:</b> solute carrier family 17 (sodium-dependent inorganic phosphate cotransporter), member 6	
<b>Immunogen Catalog Number:</b> AG29565	<b>Calculated MW:</b> 64 kDa	

## Applications

**Tested Applications:**  
Cytometric bead array, Indirect ELISA

**Species Specificity:**  
human

## Background Information

### Storage

**Storage:**  
Store at -80°C.  
**The product is shipped with ice packs. Upon receipt, store it immediately at -80°C**

**Storage Buffer:**  
PBS Only

For technical support and original validation data for this product please contact:

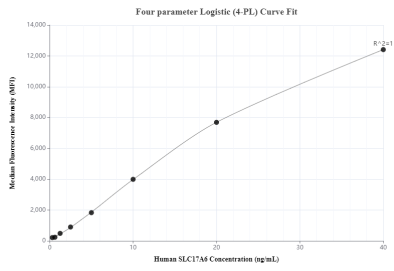
T: 4006900926

E: [Proteintech-CN@ptglab.com](mailto:Proteintech-CN@ptglab.com)

W: [ptgcn.com](http://ptgcn.com)

**This product is exclusively available under Proteintech Group brand and is not available to purchase from any other manufacturer.**

## Selected Validation Data



Cytometric bead array standard curve of MP00998-1, SLC17A6 Recombinant Matched Antibody Pair, PBS Only. Capture antibody: 84083-1-PBS. Detection antibody: 84083-2-PBS. Standard: Ag29565. Range: 0.313-40 ng/mL.