

For Research Use Only

SLC17A6 Recombinant antibody, PBS Only (Detector)



Catalog Number: 84083-2-PBS

Basic Information

Catalog Number: 84083-2-PBS	GenBank Accession Number: NM_020346	Purification Method: Protein A purification
Size: 1 mg/ml	GeneID (NCBI): 57084	CloneNo.: 241255B5
Source: Rabbit	UNIPROT ID: Q9P2U8	
Isotype: IgG	Full Name: solute carrier family 17 (sodium-dependent inorganic phosphate cotransporter), member 6	
Immunogen Catalog Number: AG29565	Calculated MW: 64 kDa	

Applications

Tested Applications:
Cytometric bead array, Indirect ELISA

Species Specificity:
human

Background Information

Storage

Storage:
Store at -80°C.
The product is shipped with ice packs. Upon receipt, store it immediately at -80°C

Storage Buffer:
PBS Only

For technical support and original validation data for this product please contact:

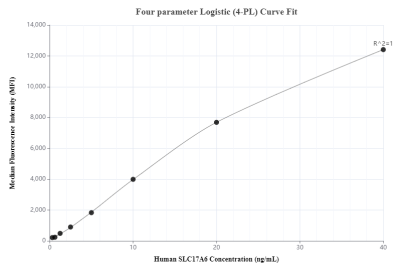
T: 4006900926

E: Proteintech-CN@ptglab.com

W: ptgcn.com

This product is exclusively available under Proteintech Group brand and is not available to purchase from any other manufacturer.

Selected Validation Data



Cytometric bead array standard curve of MP00998-1, SLC17A6 Recombinant Matched Antibody Pair, PBS Only. Capture antibody: 84083-1-PBS. Detection antibody: 84083-2-PBS. Standard: Ag29565. Range: 0.313-40 ng/mL.