

For Research Use Only

# SP6 Recombinant antibody, PBS Only (Detector)



Catalog Number: 84088-2-PBS

## Basic Information

Catalog Number: 84088-2-PBS	GenBank Accession Number: BC103951	Purification Method: Protein A purification
Size: 1 mg/ml	GeneID (NCBI): 80320	CloneNo.: 241169E1
Source: Rabbit	UNIPROT ID: Q3SY56	
Isotype: IgG	Full Name: Sp6 transcription factor	
Immunogen Catalog Number: AG29372	Calculated MW: 376 aa, 40 kDa	

## Applications

**Tested Applications:**  
Cytometric bead array, Indirect ELISA

**Species Specificity:**  
human

## Background Information

### Storage

**Storage:**  
Store at -80°C.  
**The product is shipped with ice packs. Upon receipt, store it immediately at -80°C**

**Storage Buffer:**  
PBS Only

For technical support and original validation data for this product please contact:

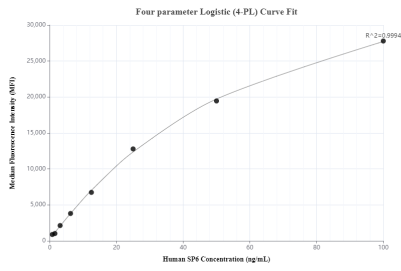
T: 4006900926

E: [Proteintech-CN@ptglab.com](mailto:Proteintech-CN@ptglab.com)

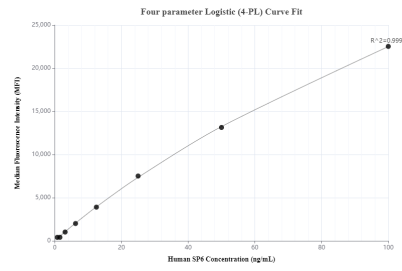
W: [ptgcn.com](http://ptgcn.com)

**This product is exclusively available under Proteintech Group brand and is not available to purchase from any other manufacturer.**

## Selected Validation Data



Cytometric bead array standard curve of MP01005-2, SP6 Recombinant Matched Antibody Pair, PBS Only. Capture antibody: 84088-4-PBS. Detection antibody: 84088-2-PBS. Standard: Ag29372. Range: 0.781-100 ng/mL.



Cytometric bead array standard curve of MP01005-3, SP6 Recombinant Matched Antibody Pair, PBS Only. Capture antibody: 84088-3-PBS. Detection antibody: 84088-2-PBS. Standard: Ag29372. Range: 0.781-100 ng/mL.