

For Research Use Only

# IGFBP2 Recombinant antibody

Catalog Number: 84092-3-RR



## Basic Information

Catalog Number:

84092-3-RR

Size:

1000  $\mu$ g/ml

Source:

Rabbit

Isotype:

IgG

GenBank Accession Number:

NM\_008342.3

GeneID (NCBI):

16008

UNIPROT ID:

P47877

Full Name:

insulin-like growth factor binding protein 2

Calculated MW:

33kDa

Purification Method:

Protein A purification

CloneNo.:

241363D8

Recommended Dilutions:

IF/ICC 1:125-1:500

## Applications

Tested Applications:

IF/ICC, ELISA

Species Specificity:

mouse

Positive Controls:

IF/ICC : HeLa cells,

## Background Information

IGFBP2 is a key member of the IGFBP family that is highly expressed in embryonic and fetal tissues and decreases significantly after birth. IGFBP2 mediates IGF-independent tumorigenesis by participating in intracellular and nuclear regulatory networks and may serve as an excellent prognostic biomarker in various cancers (PMID: 35546443).

## Storage

Storage:

Store at -20°C. Stable for one year after shipment.

Storage Buffer:

PBS with 0.02% sodium azide and 50% glycerol pH 7.3.

Aliquoting is unnecessary for -20°C storage

For technical support and original validation data for this product please contact:

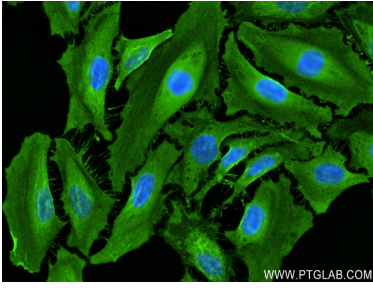
T: 4006900926

E: [Proteintech-CN@ptglab.com](mailto:Proteintech-CN@ptglab.com)

W: [ptgcn.com](http://ptgcn.com)

This product is exclusively available under Proteintech Group brand and is not available to purchase from any other manufacturer.

## Selected Validation Data



Immunofluorescent analysis of (4% PFA) fixed HeLa cells using IGFBP2 antibody (84092-3-RR, Clone: 241363D8 ) at dilution of 1:250 and CoraLite®488-Conjugated AffiniPure Goat Anti-Rabbit IgG(H+L) (SA00013-2).