

For Research Use Only

# Complement factor B Recombinant antibody, PBS Only (Capture)

Catalog Number: 84101-10-PBS



## Basic Information

Catalog Number:

84101-10-PBS

Concentration:

1 mg/ml

Source:

Rabbit

Isotype:

IgG

GenBank Accession Number:

NM\_001710.6

GeneID (NCBI):

629

UNIPROT ID:

P00751-1

Full Name:

complement factor B

Calculated MW:

86kDa

Purification Method:

Protein A purification

CloneNo.:

242709A6

## Applications

Tested Applications:

Sandwich ELISA, Indirect ELISA, Sample test

Species Specificity:

human

## Background Information

### Storage

Storage:

Store at -80°C.

The product is shipped with ice packs. Upon receipt, store it immediately at -80°C

Storage Buffer:

PBS Only

For technical support and original validation data for this product please contact:

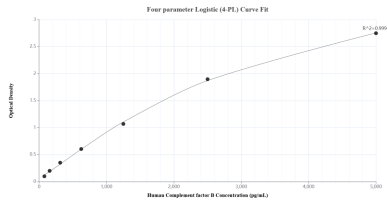
T: 4006900926

E: Proteintech-CN@ptglab.com

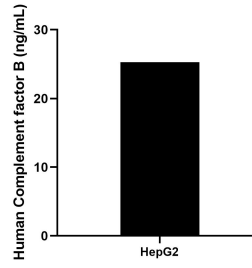
W: ptgcn.com

This product is exclusively available under Proteintech Group brand and is not available to purchase from any other manufacturer.

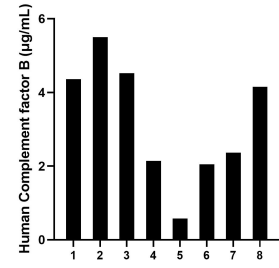
## Selected Validation Data



Sandwich ELISA standard curve of MP01031-4, Human Complement factor B Recombinant Matched Antibody Pair - PBS only. 84101-10-PBS was coated to a plate as the capture antibody and incubated with serial dilutions of standard Eg1224. 84101-8-PBS was HRP conjugated as the detection antibody. Range: 78.1-5000 pg/mL



The mean Complement factor B concentration was determined to be 25.3 ng/mL in HepG2 cell extract based on a 1.8 mg/mL extract load.



Serum of eight individual healthy human donors was measured. The Complement factor B concentration of detected samples was determined to be 3.2 µg/mL with a range of 0.6-5.5 µg/mL