

For Research Use Only

Complement factor B Recombinant antibody, PBS Only (Detector)

Catalog Number: 84101-8-PBS



Basic Information

Catalog Number: 84101-8-PBS	GenBank Accession Number: NM_001710.6	Purification Method: Protein A purification
Concentration: 1 mg/ml	GeneID (NCBI): 629	CloneNo.: 242709A2
Source: Rabbit	UNIPROT ID: P00751-1	
Isotype: IgG	Full Name: complement factor B	
	Calculated MW: 86kDa	

Applications

Tested Applications:
Sandwich ELISA, Indirect ELISA, Sample test

Species Specificity:
human

Background Information

Storage

Storage:
Store at -80°C.
The product is shipped with ice packs. Upon receipt, store it immediately at -80°C

Storage Buffer:
PBS Only

For technical support and original validation data for this product please contact:

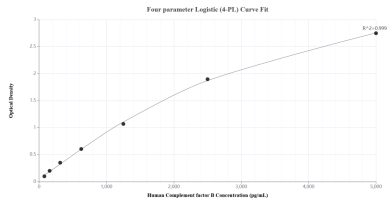
T: 4006900926

E: Proteintech-CN@ptglab.com

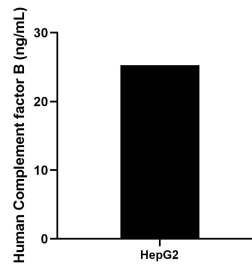
W: ptgcn.com

This product is exclusively available under Proteintech Group brand and is not available to purchase from any other manufacturer.

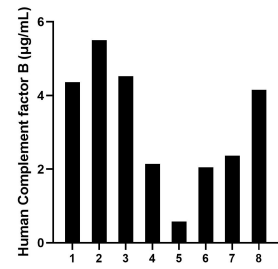
Selected Validation Data



Sandwich ELISA standard curve of MP01031-4, Human Complement factor B Recombinant Matched Antibody Pair - PBS only. 84101-10-PBS was coated to a plate as the capture antibody and incubated with serial dilutions of standard Eg1224. 84101-8-PBS was HRP conjugated as the detection antibody. Range: 78.1-5000 pg/mL



The mean Complement factor B concentration was determined to be 25.3 ng/mL in HepG2 cell extract based on a 1.8 mg/mL extract load.



Serum of eight individual healthy human donors was measured. The Complement factor B concentration of detected samples was determined to be 3.2 µg/mL with a range of 0.6-5.5 µg/mL