

For Research Use Only

RBM10 Recombinant antibody

Catalog Number: 84104-4-RR



Basic Information

Catalog Number: 84104-4-RR	GenBank Accession Number: BC024153	Purification Method: Protein A purification
Size: 1000 µg/ml	GeneID (NCBI): 8241	CloneNo.: 241151G11
Source: Rabbit	UNIPROT ID: P98175	Recommended Dilutions: WB 1:2000-1:10000 IF/ICC 1:200-1:800
Isotype: IgG	Full Name: RNA binding motif protein 10	
Immunogen Catalog Number: AG5788	Calculated MW: 104 kDa	
	Observed MW: 100-120 kDa	

Applications

Tested Applications: WB, IF/ICC, ELISA	Positive Controls:
Species Specificity: human, mouse, rat	WB : HeLa cells, A549 cells, MDA-MB-231 cells, mouse brain tissue, rat brain tissue
	IF/ICC : A431 cells,

Background Information

RBM10, also named as RNA-binding protein 10, is a 930 amino acid protein, which is in the extranucleolar nucleoplasm constitutes hundreds of nuclear domains, which dynamically change their structures in a reversible manner. RBM10 may be involved in post-transcriptional processing, most probably in mRNA splicing. RBM10 has some isoforms with MV 100-130 kDa (PMID: 25889998 and PMID: 18315527).

Storage

Storage:
Store at -20°C. Stable for one year after shipment.
Storage Buffer:
PBS with 0.02% sodium azide and 50% glycerol pH 7.3.
Aliquoting is unnecessary for -20°C storage

For technical support and original validation data for this product please contact:

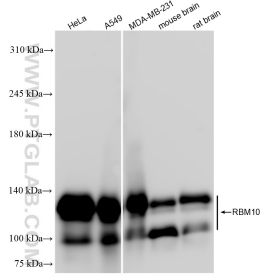
T: 4006900926

E: Proteintech-CN@ptglab.com

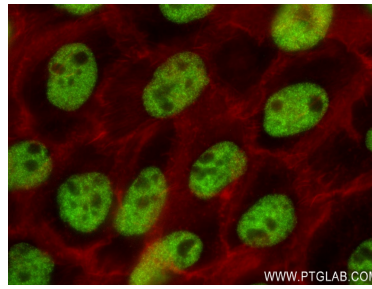
W: ptgcn.com

This product is exclusively available under Proteintech Group brand and is not available to purchase from any other manufacturer.

Selected Validation Data



Various lysates were subjected to SDS PAGE followed by western blot with 84104-4-RR (RBM10 antibody) at dilution of 1:5000 incubated at room temperature for 1.5 hours.



Immunofluorescent analysis of (4% PFA) fixed A431 cells using RBM10 antibody (84104-4-RR, Clone: 241151G11) at dilution of 1:400 and CoraLite®488-Conjugated AffiniPure Goat Anti-Rabbit IgG(H+L) (SA00013-2), CL594-Phalloidin (red).