

For Research Use Only

DNA2 Recombinant antibody, PBS Only (Capture)

Catalog Number: 84105-4-PBS



Basic Information

Catalog Number: 84105-4-PBS	GenBank Accession Number: NM_001080449	Purification Method: Protein A purification
Size: 1 mg/ml	GeneID (NCBI): 1763	CloneNo.: 241073G11
Source: Rabbit	UNIPROT ID: P51530	
Isotype: IgG	Full Name: DNA replication helicase 2 homolog (yeast)	
	Calculated MW: 120 kDa	

Applications

Tested Applications:
Sandwich ELISA, Indirect ELISA, Sample test

Species Specificity:
human

Background Information

Storage

Storage:
Store at -80°C.
The product is shipped with ice packs. Upon receipt, store it immediately at -80°C

Storage Buffer:
PBS Only

For technical support and original validation data for this product please contact:

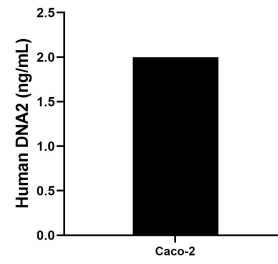
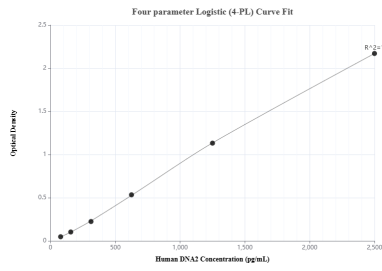
T: 4006900926

E: Proteintech-CN@ptglab.com

W: ptgcn.com

This product is exclusively available under Proteintech Group brand and is not available to purchase from any other manufacturer.

Selected Validation Data



Sandwich ELISA standard curve of MP01042-3, Human DNA2 Recombinant Matched Antibody Pair - PBS only. 84105-4-PBS was coated to a plate as the capture antibody and incubated with serial dilutions of standard SY00221. 84105-3-PBS was HRP conjugated as the detection antibody. Range: 78.1-2500 pg/mL

The mean DNA2 concentration was determined to be 2.00 ng/mL in Caco-2 cell extract based on a 1.5 mg/mL extract load.