

For Research Use Only

# CD2 Recombinant antibody, PBS Only (Detector)

Catalog Number: 84108-3-PBS



## Basic Information

<b>Catalog Number:</b> 84108-3-PBS	<b>GenBank Accession Number:</b> BC033583	<b>Purification Method:</b> Protein A purification
<b>Size:</b> 1 mg/ml	<b>GeneID (NCBI):</b> 914	<b>CloneNo.:</b> 241222E10
<b>Source:</b> Rabbit	<b>ENSEMBL Gene ID:</b> ENSG00000116824	
<b>Isotype:</b> IgG	<b>UNIPROT ID:</b> P06729	
	<b>Full Name:</b> CD2 molecule	
	<b>Calculated MW:</b> 351 aa, 39 kDa	

## Applications

**Tested Applications:**  
Cytometric bead array, Sandwich ELISA, Indirect ELISA, Sample test

**Species Specificity:**  
human

## Background Information

### Storage

**Storage:**  
Store at -80°C.  
**The product is shipped with ice packs. Upon receipt, store it immediately at -80°C**

**Storage Buffer:**  
PBS Only

For technical support and original validation data for this product please contact:

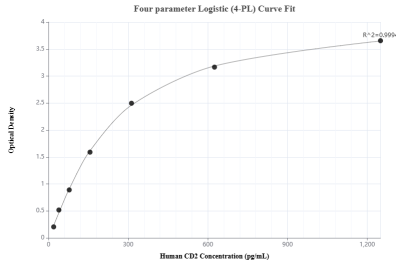
T: 4006900926

E: [Proteintech-CN@ptglab.com](mailto:Proteintech-CN@ptglab.com)

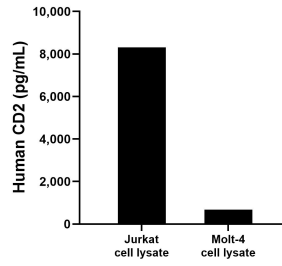
W: [ptgcn.com](http://ptgcn.com)

**This product is exclusively available under Proteintech Group brand and is not available to purchase from any other manufacturer.**

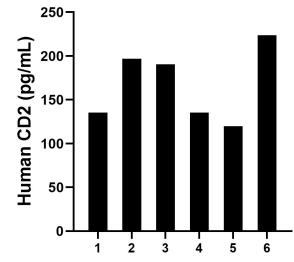
## Selected Validation Data



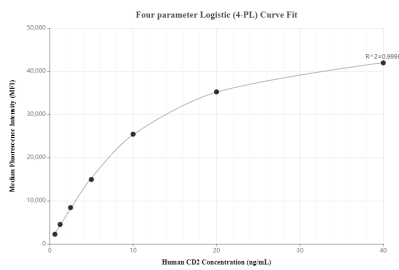
Sandwich ELISA standard curve of MP01045-4, Human CD2 Recombinant Matched Antibody Pair - PBS only. 84108-5-PBS was coated to a plate as the capture antibody and incubated with serial dilutions of standard Eg1271. 84108-3-PBS was HRP conjugated as the detection antibody. Range: 19.5-1250 pg/mL



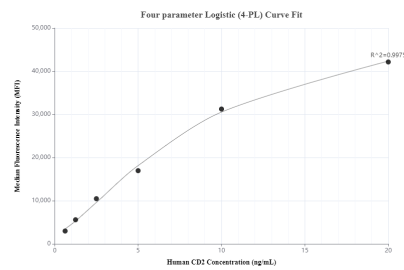
Jurkat and Molt-4 cell lysate were measured. The human CD2 concentration of detected samples was determined to be 8,318.1 pg/mL (based on a 1.0 mg/mL extract load) in Jurkat cell lysate and 679.3 pg/mL (based on a 4.5 mg/mL extract load) in Molt-4 cell lysate.



Serum of six individual healthy human donors was measured. The human CD2 concentration of detected samples was determined to be 167.0 pg/mL with a range of 119.9 - 223.9 pg/mL.



Cytometric bead array standard curve of MP01045-2, CD2 Recombinant Matched Antibody Pair, PBS Only. Capture antibody: 84108-2-PBS. Detection antibody: 84108-3-PBS. Standard: Eg1271. Range: 0.625-40 ng/mL



Cytometric bead array standard curve of MP01045-3, CD2 Recombinant Matched Antibody Pair, PBS Only. Capture antibody: 84108-1-PBS. Detection antibody: 84108-3-PBS. Standard: Eg1271. Range: 0.625-40 ng/mL