

For Research Use Only

# CD2 Recombinant antibody

Catalog Number: 84108-3-RR



## Basic Information

**Catalog Number:**

84108-3-RR

**Size:**

1000 ug/ml

**Source:**

Rabbit

**Isotype:**

IgG

**GenBank Accession Number:**

BC033583

**GeneID (NCBI):**

914

**ENSEMBL Gene ID:**

ENSG00000116824

**UNIPROT ID:**

P06729

**Full Name:**

CD2 molecule

**Calculated MW:**

351 aa, 39 kDa

**Purification Method:**

Protein A purification

**CloneNo.:**

241222E10

**Recommended Dilutions:**

IF/ICC 1:200-1:800

## Applications

**Tested Applications:**

IF/ICC, ELISA

**Species Specificity:**

human

**Positive Controls:**

IF/ICC : Jurkat cells,

## Background Information

CD2 is a cell surface glycoprotein present on a majority of thymocytes, all mature T cells and subset of NK cells but not on B lymphocytes. It is a pan T-cell marker. CD2 interacts with lymphocyte function-associated antigen (LFA-3/CD58) and CD48/BCM1 to mediate adhesion between T-cells and other cell types. CD2 is implicated in the triggering of T-cells, the cytoplasmic domain is implicated in the signaling function.

## Storage

**Storage:**

Store at -20°C. Stable for one year after shipment.

**Storage Buffer:**

PBS with 0.02% sodium azide and 50% glycerol pH 7.3.

Aliquoting is unnecessary for -20°C storage

For technical support and original validation data for this product please contact:

T: 4006900926

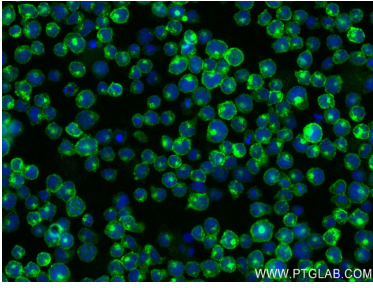
E: Proteintech-CN@ptglab.com

W: ptgcn.com

This product is exclusively available under Proteintech Group brand and is not available to purchase from any other manufacturer.

---

## Selected Validation Data



Immunofluorescent analysis of (4% PFA) fixed Jurkat cells using CD2 antibody (84108-3-RR, Clone: 241222E10 ) at dilution of 1:400 and CoraLite®488-Conjugated Goat Anti-Rabbit IgG(H+L) (SA00013-2).