

For Research Use Only

# CD2 Recombinant antibody, PBS Only (Capture)

Catalog Number: 84108-5-PBS



## Basic Information

Catalog Number:

84108-5-PBS

Size:

1 mg/ml

Source:

Rabbit

Isotype:

IgG

GenBank Accession Number:

BC033583

GeneID (NCBI):

914

ENSEMBL Gene ID:

ENSG00000116824

UNIPROT ID:

P06729

Full Name:

CD2 molecule

Calculated MW:

351 aa, 39 kDa

Observed MW:

50 kDa

Purification Method:

Protein A purification

CloneNo.:

241222B8

## Applications

Tested Applications:

WB, Sandwich ELISA, Indirect ELISA, Sample test

Species Specificity:

human

## Background Information

CD2 is a cell surface glycoprotein present on a majority of thymocytes, all mature T cells and subset of NK cells but not on B lymphocytes. It is a pan T-cell marker. CD2 interacts with lymphocyte function-associated antigen (LFA-3/CD58) and CD48/BCM1 to mediate adhesion between T-cells and other cell types. CD2 is implicated in the triggering of T-cells, the cytoplasmic domain is implicated in the signaling function.

## Storage

Storage:

Store at -80°C.

**The product is shipped with ice packs. Upon receipt, store it immediately at -80°C**

Storage Buffer:

PBS Only

For technical support and original validation data for this product please contact:

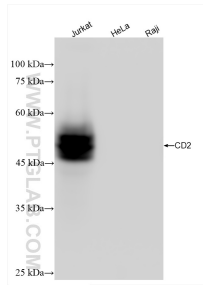
T: 4006900926

E: [Proteintech-CN@ptglab.com](mailto:Proteintech-CN@ptglab.com)

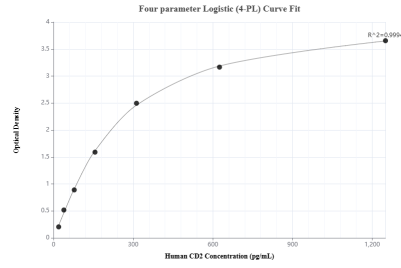
W: [ptgcn.com](http://ptgcn.com)

**This product is exclusively available under Proteintech Group brand and is not available to purchase from any other manufacturer.**

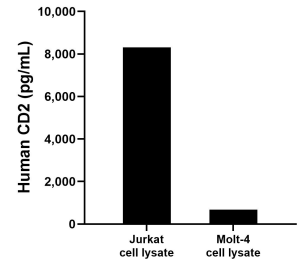
## Selected Validation Data



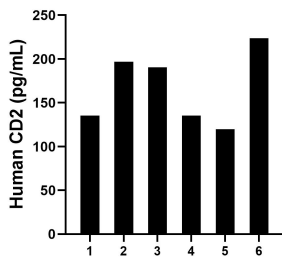
Various lysates were subjected to SDS PAGE followed by western blot with 84108-5-RR (CD2 antibody) at dilution of 1:10000 incubated at room temperature for 1.5 hours. This data was developed using the same antibody clone with 84108-5-PBS in a different storage buffer formulation.



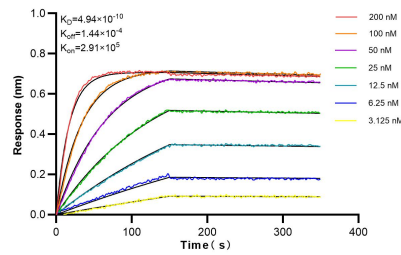
Sandwich ELISA standard curve of MP01045-4, Human CD2 Recombinant Matched Antibody Pair - PBS only. 84108-5-PBS was coated to a plate as the capture antibody and incubated with serial dilutions of standard Eg1271. 84108-3-PBS was HRP conjugated as the detection antibody. Range: 19.5-1250 pg/mL



Jurkat and Molt-4 cell lysate were measured. The human CD2 concentration of detected samples was determined to be 8,318.1 pg/mL (based on a 1.0 mg/mL extract load) in Jurkat cell lysate and 679.3 pg/mL (based on a 4.5 mg/mL extract load) in Molt-4 cell lysate.



Serum of six individual healthy human donors was measured. The human CD2 concentration of detected samples was determined to be 167.0 pg/mL with a range of 119.9 - 223.9 pg/mL.



Biolayer interferometry (BLI) kinetic assays of 84108-5-RR against Human CD2 were performed. The affinity constant is 0.494 nM.