

For Research Use Only

# SAMD9L Recombinant antibody, PBS Only (Capture)

Catalog Number:84109-1-PBS



## Basic Information

|   |   |   |
|---|---|---|
| <b>Catalog Number:</b><br>84109-1-PBS       | <b>GenBank Accession Number:</b><br>BC127118                      | <b>Purification Method:</b><br>Protein A purification |
| <b>Size:</b><br>1 mg/ml                     | <b>GeneID (NCBI):</b><br>219285                                   | <b>CloneNo.:</b><br>241250A2                          |
| <b>Source:</b><br>Rabbit                    | <b>UNIPROT ID:</b><br>Q8IVG5                                      |   |
| <b>Isotype:</b><br>IgG                      | <b>Full Name:</b><br>sterile alpha motif domain containing 9-like |   |
| <b>Immunogen Catalog Number:</b><br>AG18541 | <b>Calculated MW:</b><br>1584 aa, 185 kDa                         |   |
|   | <b>Observed MW:</b><br>160-180 kDa                                |   |

## Applications

**Tested Applications:**  
WB, Cytometric bead array, Indirect ELISA

**Species Specificity:**  
human, mouse

## Background Information

Sterile alpha motif domain-containing protein 9-like(SAMD9L), also named C7orf6, DRIF2, KIAA2005, and UEF, is a cytoplasmic protein that acts as a tumor suppressor but also plays a key role in cell proliferation and the innate immune response to viral infection. SAMD9L protein is an endosome fusion facilitator that causes myeloid malignancies in mice similar to human diseases with monosomy 7. The SAMD9L protein also appears to play an important role in the brain, particularly the part of the brain that coordinates movement (the cerebellum). SAMD9L has two isoforms with MW 185 kDa and 47 kDa.

## Storage

**Storage:**  
Store at -80°C.  
**The product is shipped with ice packs. Upon receipt, store it immediately at -80°C**

**Storage Buffer:**  
PBS Only

For technical support and original validation data for this product please contact:

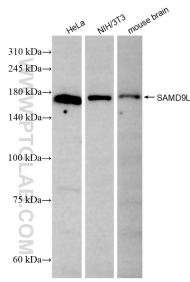
T: 4006900926

E: [Proteintech-CN@ptglab.com](mailto:Proteintech-CN@ptglab.com)

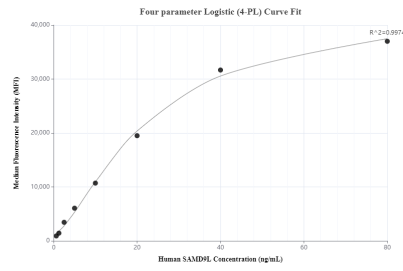
W: [ptgcn.com](http://ptgcn.com)

**This product is exclusively available under Proteintech Group brand and is not available to purchase from any other manufacturer.**

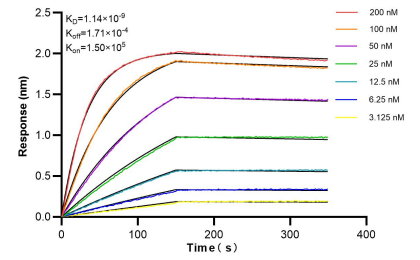
## Selected Validation Data



Various lysates were subjected to SDS PAGE followed by western blot with 84109-1-RR (SAMD9L antibody) at dilution of 1:5000 incubated at room temperature for 1.5 hours. This data was developed using the same antibody clone with 84109-1-PBS in a different storage buffer formulation.



Cytometric bead array standard curve of MP01024-2, SAMD9L Recombinant Matched Antibody Pair, PBS Only. Capture antibody: 84109-1-PBS. Detection antibody: 84109-2-PBS. Standard: Ag18541. Range: 0.625-80 ng/mL.



Bi-layer interferometry (BLI) kinetic assays of 84109-1-RR against Human SAMD9L were performed. The affinity constant is 1.14 nM.