

For Research Use Only

SAMD9L Recombinant antibody, PBS Only (Detector)

Catalog Number:84109-2-PBS



Basic Information

Catalog Number: 84109-2-PBS	GenBank Accession Number: BC127118	Purification Method: Protein A purification
Size: 1 mg/ml	GeneID (NCBI): 219285	CloneNo.: 241250A4
Source: Rabbit	UNIPROT ID: Q8IVG5	
Isotype: IgG	Full Name: sterile alpha motif domain containing 9-like	
Immunogen Catalog Number: AG18541	Calculated MW: 1584 aa, 185 kDa	

Applications

Tested Applications:
Cytometric bead array, Sandwich ELISA, Indirect ELISA, Sample test

Species Specificity:
human

Background Information

Storage

Storage:
Store at -80°C.
The product is shipped with ice packs. Upon receipt, store it immediately at -80°C

Storage Buffer:
PBS Only

For technical support and original validation data for this product please contact:

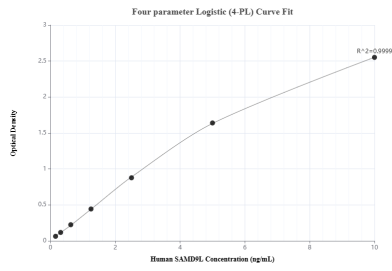
T: 4006900926

E: Proteintech-CN@ptglab.com

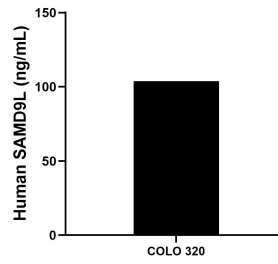
W: ptgcn.com

This product is exclusively available under Proteintech Group brand and is not available to purchase from any other manufacturer.

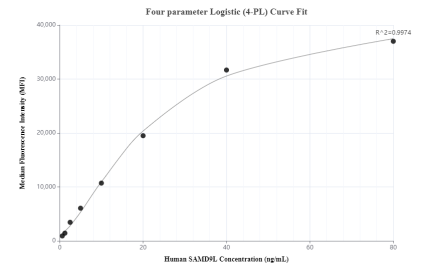
Selected Validation Data



Sandwich ELISA standard curve of MP01024-4, Human SAMD9L Recombinant Matched Antibody Pair - PBS only. 84109-5-PBS was coated to a plate as the capture antibody and incubated with serial dilutions of standard Ag18541. 84109-2-PBS was HRP conjugated as the detection antibody. Range: 0.156-10 ng/mL



The mean SAMD9L concentration was determined to be 103.86 ng/mL in COLO 320 cell extract based on a 2.0 mg/mL extract load.



Cytometric bead array standard curve of MP01024-2, SAMD9L Recombinant Matched Antibody Pair, PBS Only. Capture antibody: 84109-1-PBS. Detection antibody: 84109-2-PBS. Standard: Ag18541. Range: 0.625-80 ng/mL