

For Research Use Only

# SAMD9L Recombinant antibody, PBS Only (Capture)



Catalog Number: 84109-3-PBS

## Basic Information

<b>Catalog Number:</b> 84109-3-PBS	<b>GenBank Accession Number:</b> BC127118	<b>Purification Method:</b> Protein A purification
<b>Size:</b> 1 mg/ml	<b>GeneID (NCBI):</b> 219285	<b>CloneNo.:</b> 241250B1
<b>Source:</b> Rabbit	<b>UNIPROT ID:</b> Q8IVG5	
<b>Isotype:</b> IgG	<b>Full Name:</b> sterile alpha motif domain containing 9-like	
<b>Immunogen Catalog Number:</b> AG18541	<b>Calculated MW:</b> 1584 aa, 185 kDa	

## Applications

**Tested Applications:**  
Cytometric bead array, Indirect ELISA

**Species Specificity:**  
human

## Background Information

### Storage

**Storage:**  
Store at -80°C.  
**The product is shipped with ice packs. Upon receipt, store it immediately at -80°C**

**Storage Buffer:**  
PBS Only

For technical support and original validation data for this product please contact:

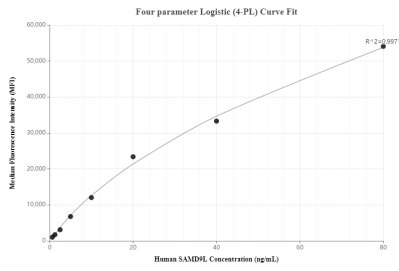
T: 4006900926

E: [Proteintech-CN@ptglab.com](mailto:Proteintech-CN@ptglab.com)

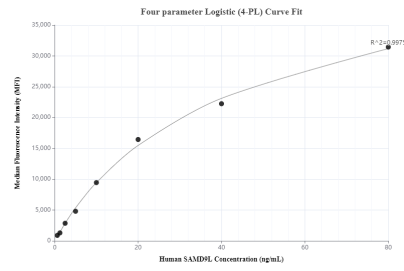
W: [ptgcn.com](http://ptgcn.com)

**This product is exclusively available under Proteintech Group brand and is not available to purchase from any other manufacturer.**

## Selected Validation Data



Cytometric bead array standard curve of MP01024-1, SAMD9L Recombinant Matched Antibody Pair, PBS Only. Capture antibody: 84109-3-PBS. Detection antibody: 84109-4-PBS. Standard: Ag18541. Range: 0.625-80 ng/mL.



Cytometric bead array standard curve of MP01024-3, SAMD9L Recombinant Matched Antibody Pair, PBS Only. Capture antibody: 84109-3-PBS. Detection antibody: 84109-5-PBS. Standard: Ag18541. Range: 0.625-80 ng/mL.