

For Research Use Only

# SAMD9L Recombinant antibody, PBS Only (Capture/Detector)

Catalog Number:84109-5-PBS



## Basic Information

|   |   |   |
|---|---|---|
| <b>Catalog Number:</b><br>84109-5-PBS       | <b>GenBank Accession Number:</b><br>BC127118                      | <b>Purification Method:</b><br>Protein A purification |
| <b>Size:</b><br>1 mg/ml                     | <b>GeneID (NCBI):</b><br>219285                                   | <b>CloneNo.:</b><br>241250H6                          |
| <b>Source:</b><br>Rabbit                    | <b>UNIPROT ID:</b><br>Q8IVG5                                      |   |
| <b>Isotype:</b><br>IgG                      | <b>Full Name:</b><br>sterile alpha motif domain containing 9-like |   |
| <b>Immunogen Catalog Number:</b><br>AG18541 | <b>Calculated MW:</b><br>1584 aa, 185 kDa                         |   |

## Applications

**Tested Applications:**  
Cytometric bead array, Sandwich ELISA, Indirect ELISA, Sample test

**Species Specificity:**  
human

## Background Information

### Storage

**Storage:**  
Store at -80°C.  
**The product is shipped with ice packs. Upon receipt, store it immediately at -80°C**

**Storage Buffer:**  
PBS Only

For technical support and original validation data for this product please contact:

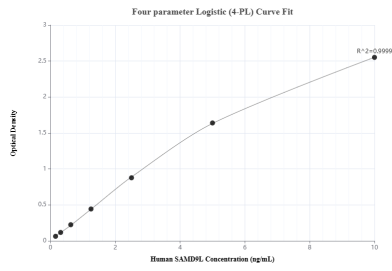
T: 4006900926

E: Proteintech-CN@ptglab.com

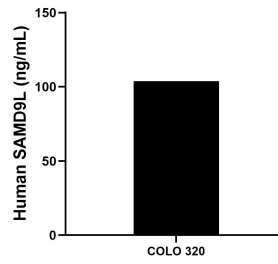
W: ptgcn.com

**This product is exclusively available under Proteintech Group brand and is not available to purchase from any other manufacturer.**

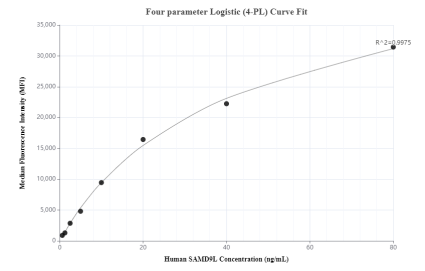
## Selected Validation Data



Sandwich ELISA standard curve of MP01024-4, Human SAMD9L Recombinant Matched Antibody Pair - PBS only. 84109-5-PBS was coated to a plate as the capture antibody and incubated with serial dilutions of standard Ag18541. 84109-2-PBS was HRP conjugated as the detection antibody. Range: 0.156-10 ng/mL



The mean SAMD9L concentration was determined to be 103.86 ng/mL in COLO 320 cell extract based on a 2.0 mg/mL extract load.



Cytometric bead array standard curve of MP01024-3, SAMD9L Recombinant Matched Antibody Pair, PBS Only. Capture antibody: 84109-3-PBS. Detection antibody: 84109-5-PBS. Standard: Ag18541. Range: 0.625-80 ng/mL