

For Research Use Only

# IL23R Recombinant antibody, PBS Only (Capture)



Catalog Number: 84112-4-PBS

## Basic Information

Catalog Number:

84112-4-PBS

Size:

1 mg/ml

Source:

Rabbit

Isotype:

IgG

GenBank Accession Number:

NM\_144701.3

GeneID (NCBI):

149233

UNIPROT ID:

Q5VWK5-1

Full Name:

interleukin 23 receptor

Calculated MW:

82 kDa

Purification Method:

Protein A purification

CloneNo.:

240905G11

## Applications

Tested Applications:

Cytometric bead array, Indirect ELISA

Species Specificity:

human

## Background Information

### Storage

Storage:

Store at -80°C.

The product is shipped with ice packs. Upon receipt, store it immediately at -80°C

Storage Buffer:

PBS Only

For technical support and original validation data for this product please contact:

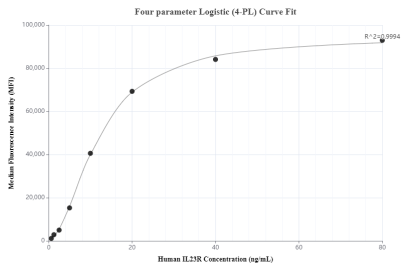
T: 4006900926

E: [Proteintech-CN@ptglab.com](mailto:Proteintech-CN@ptglab.com)

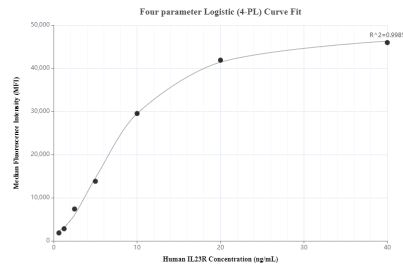
W: [ptgcn.com](http://ptgcn.com)

This product is exclusively available under Proteintech Group brand and is not available to purchase from any other manufacturer.

## Selected Validation Data



Cytometric bead array standard curve of MP01048-1, IL23R Recombinant Matched Antibody Pair, PBS Only. Capture antibody: 84112-4-PBS. Detection antibody: 84112-2-PBS. Standard: Eg0853. Range: 0.625-80 ng/mL



Cytometric bead array standard curve of MP01048-3, IL23R Recombinant Matched Antibody Pair, PBS Only. Capture antibody: 84112-4-PBS. Detection antibody: 84112-3-PBS. Standard: Eg0853. Range: 0.625-40 ng/mL