

For Research Use Only

# Synaptotagmin-9 Recombinant antibody, PBS Only

Catalog Number: 84123-3-PBS



## Basic Information

<b>Catalog Number:</b> 84123-3-PBS	<b>GenBank Accession Number:</b> BC029605	<b>Purification Method:</b> Protein A purification
<b>Size:</b> 1 mg/ml	<b>GeneID (NCBI):</b> 143425	<b>CloneNo.:</b> 241407A11
<b>Source:</b> Rabbit	<b>UNIPROT ID:</b> Q86556	
<b>Isotype:</b> IgG	<b>Full Name:</b> synaptotagmin IX	
<b>Immunogen Catalog Number:</b> AG3520	<b>Calculated MW:</b> 491 aa, 52 kDa	
	<b>Observed MW:</b> 52-56 kDa	

## Applications

**Tested Applications:**  
WB, Indirect ELISA

**Species Specificity:**  
human, mouse

## Background Information

The synaptotagmins are integral membrane proteins of synaptic vesicles thought to serve as Ca<sup>2+</sup> sensors in the process of vesicular trafficking and exocytosis (PMID: 8058779). Synaptotagmin-9 (SYT9) is a tandem C2 domain Ca<sup>2+</sup> sensor for exocytosis in neuroendocrine cells (PMID: 36732068).

## Storage

**Storage:**  
Store at -80°C.  
**The product is shipped with ice packs. Upon receipt, store it immediately at -80°C**

**Storage Buffer:**  
PBS Only

For technical support and original validation data for this product please contact:

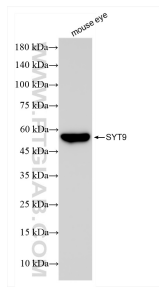
T: 4006900926

E: [Proteintech-CN@ptglab.com](mailto:Proteintech-CN@ptglab.com)

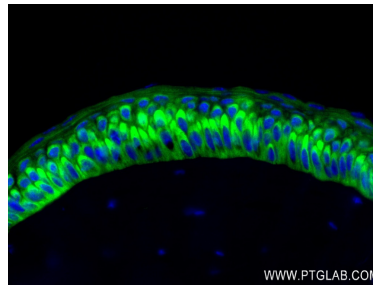
W: [ptgcn.com](http://ptgcn.com)

**This product is exclusively available under Proteintech Group brand and is not available to purchase from any other manufacturer.**

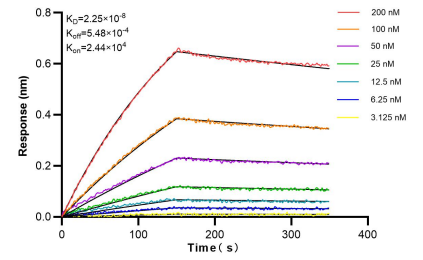
## Selected Validation Data



mouse eye tissue was subjected to SDS PAGE followed by western blot with 84123-3-RR (Synaptotagmin-9 antibody) at dilution of 1:10000 incubated at room temperature for 1.5 hours. This data was developed using the same antibody clone with 84123-3-PBS in a different storage buffer formulation.



Immunofluorescent analysis of (4% PFA) fixed mouse retina tissue using Synaptotagmin-9 antibody (84123-3-RR, Clone: 241407A11) at dilution of 1:500 and CoraLite®488-Conjugated Goat Anti-Rabbit IgG(H+L) (SA00013-2). This data was developed using the same antibody clone with 84123-3-PBS in a different storage buffer formulation.



Bi-layer interferometry (BLI) kinetic assays of 84123-3-RR against Human Synaptotagmin-9 were performed. The affinity constant is 22.5 nM.