

For Research Use Only

# Mouse HER2/ErbB2 Recombinant antibody, PBS Only

Catalog Number: 84128-5-PBS



## Basic Information

Catalog Number:

84128-5-PBS

Size:

1 mg/ml

Source:

Rabbit

Isotype:

IgG

GenBank Accession Number:

NM\_001003817.1

GeneID (NCBI):

13866

UNIPROT ID:

P70424

Full Name:

v-erb-b2 erythroblastic leukemia  
viral oncogene homolog 2,  
neuro/glioblastoma derived  
oncogene homolog (avian)

Calculated MW:

139 kDa

Observed MW:

185 kDa

Purification Method:

Protein A purification

CloneNo.:

241366F4

## Applications

Tested Applications:

WB, IF/ICC, Indirect ELISA

Species Specificity:

mouse

## Background Information

Her2, or ErbB2, is a member of the EGF receptor family of receptor tyrosine kinases. It has no ligand-binding domain of its own. However, it does bind tightly to other ligand-bound EGF receptor family members to form a heterodimer, stabilizing ligand binding and enhancing kinase-mediated activation of downstream signaling pathways, such as those involving mitogen-activated protein kinase and phosphatidylinositol-3 kinase.

## Storage

Storage:

Store at -80°C.

**The product is shipped with ice packs. Upon receipt, store it immediately at -80°C**

Storage Buffer:

PBS Only

For technical support and original validation data for this product please contact:

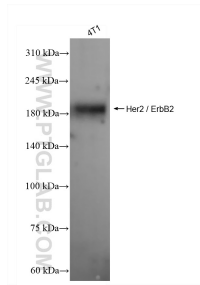
T: 4006900926

E: [Proteintech-CN@ptglab.com](mailto:Proteintech-CN@ptglab.com)

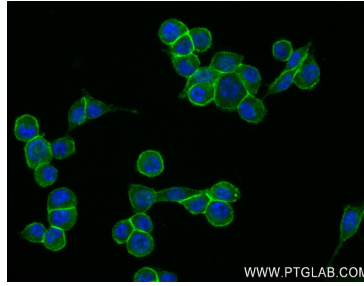
W: [ptgcn.com](http://ptgcn.com)

**This product is exclusively available under Proteintech Group brand and is not available to purchase from any other manufacturer.**

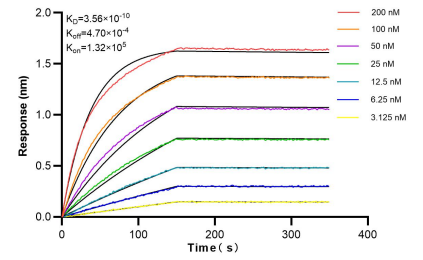
## Selected Validation Data



4T1 cells were subjected to SDS PAGE followed by western blot with 84128-5-RR (Her2 / ErbB2 antibody) at dilution of 1:3000 incubated at room temperature for 1.5 hours. This data was developed using the same antibody clone with 84128-5-PBS in a different storage buffer formulation.



Immunofluorescent analysis of (4% PFA) fixed 4T1 cells using Her2 / ErbB2 antibody (84128-5-RR, Clone: 241366F4) at dilution of 1:250 and CoraLite®488-Conjugated Goat Anti-Rabbit IgG(H+L) (SA00013-2). This data was developed using the same antibody clone with 84128-5-PBS in a different storage buffer formulation.



Bi-layer interferometry (BLI) kinetic assays of 84128-5-RR against Mouse Her2 / ErbB2 were performed. The affinity constant is 0.356 nM.