

For Research Use Only

HER2/ErbB2 Recombinant antibody

Catalog Number:84128-5-RR



Basic Information

Catalog Number:

84128-5-RR

Size:

1000 ug/ml

Source:

Rabbit

Isotype:

IgG

GenBank Accession Number:

NM_001003817.1

GeneID (NCBI):

13866

UNIPROT ID:

P70424

Full Name:

v-erb-b2 erythroblastic leukemia
viral oncogene homolog 2,
neuro/glioblastoma derived
oncogene homolog (avian)

Calculated MW:

139 kDa

Observed MW:

185 kDa

Purification Method:

Protein A purification

CloneNo.:

241366F4

Recommended Dilutions:

WB 1:1000-1:6000

IF/ICC 1:125-1:500

Applications

Tested Applications:

WB, IF/ICC, ELISA

Species Specificity:

mouse

Positive Controls:

WB : 4T1 cells,

IF/ICC : 4T1 cells,

Background Information

Her2, or ErbB2, is a member of the EGF receptor family of receptor tyrosine kinases. It has no ligand-binding domain of its own. However, it does bind tightly to other ligand-bound EGF receptor family members to form a heterodimer, stabilizing ligand binding and enhancing kinase-mediated activation of downstream signaling pathways, such as those involving mitogen-activated protein kinase and phosphatidylinositol-3 kinase.

Storage

Storage:

Store at -20°C. Stable for one year after shipment.

Storage Buffer:

PBS with 0.02% sodium azide and 50% glycerol pH 7.3.

Aliquoting is unnecessary for -20°C storage

For technical support and original validation data for this product please contact:

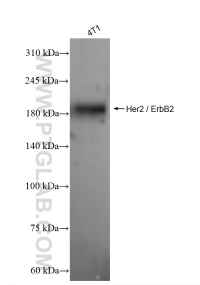
T: 4006900926

E: Proteintech-CN@ptglab.com

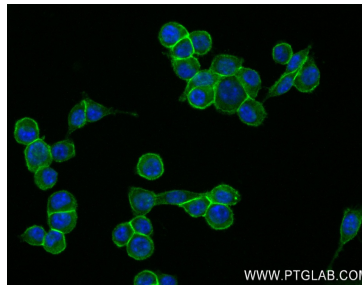
W: ptgcn.com

This product is exclusively available under Proteintech Group brand and is not available to purchase from any other manufacturer.

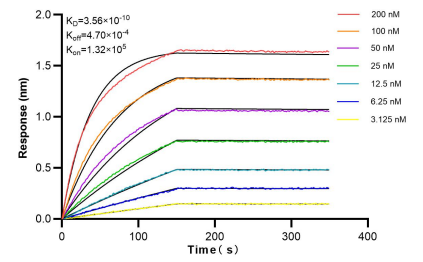
Selected Validation Data



4T1 cells were subjected to SDS PAGE followed by western blot with 84128-5-RR (Her2 / ErbB2 antibody) at dilution of 1:3000 incubated at room temperature for 1.5 hours.



Immunofluorescent analysis of (4% PFA) fixed 4T1 cells using Her2 / ErbB2 antibody (84128-5-RR, Clone: 241366F4) at dilution of 1:250 and CoraLite®488-Conjugated Goat Anti-Rabbit IgG(H+L) (SA00013-2).



Bioluminescence resonance energy transfer (BRET) kinetic assays of 84128-5-RR against Mouse Her2 / ErbB2 were performed. The affinity constant is 0.356 nM.