

For Research Use Only

NELF-B Recombinant antibody, PBS Only (Capture)

Catalog Number: 84135-2-PBS



Basic Information

| | | |
|--|---|---|
| Catalog Number: 84135-2-PBS | GenBank Accession Number: BC011892 | Purification Method: Protein A purification |
| Size: 1 mg/ml | GeneID (NCBI): 25920 | CloneNo.: 241434C6 |
| Source: Rabbit | UNIPROT ID: Q8WX92 | |
| Isotype: IgG | Full Name: cofactor of BRCA1 | |
| Immunogen Catalog Number: AG9599 | Calculated MW: 580aa,66 kDa; 475aa,54 kDa | |
| | Observed MW: 66 kDa | |

Applications

Tested Applications:
WB, FC (Intra), Cytometric bead array, Indirect ELISA

Species Specificity:
human

Background Information

Cofactor of BRCA1 (COBRA1) was first identified as a BRCA1-interacting protein and subsequently found to be the B subunit of the negative elongation factor complex (NELF-B). Cobra1 is essential for early embryogenesis (PMID: 19340312). The MW of this protein is 66 kDa, and this antibody specially recognises the 66 kDa protein.

Storage

Storage:
Store at -80°C.
The product is shipped with ice packs. Upon receipt, store it immediately at -80°C

Storage Buffer:
PBS Only

For technical support and original validation data for this product please contact:

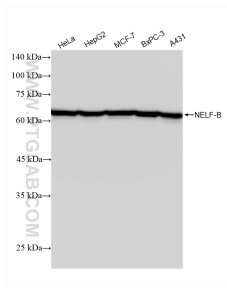
T: 4006900926

E: Proteintech-CN@ptglab.com

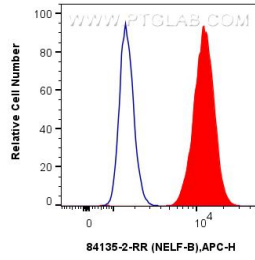
W: ptgcn.com

This product is exclusively available under Proteintech Group brand and is not available to purchase from any other manufacturer.

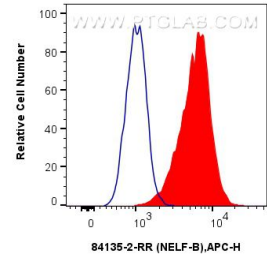
Selected Validation Data



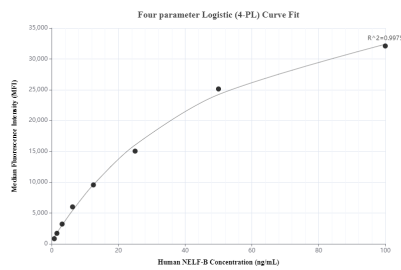
Various lysates were subjected to SDS PAGE followed by western blot with 84135-2-RR (NELF-B antibody) at dilution of 1:10000 incubated at room temperature for 1.5 hours. This data was developed using the same antibody clone with 84135-2-PBS in a different storage buffer formulation.



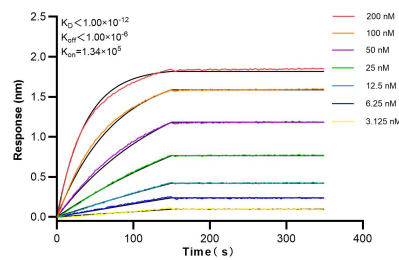
1×10^6 A431 cells were intracellularly stained with 0.25 ug NELF-B Recombinant Antibody (84135-2-RR, Clone:241434C6) and APC-Conjugated Goat Anti-Rabbit IgG(H+L)(red), or 0.25 ug Isotype Control (blue). Cells were fixed and permeabilized with True-Nuclear Transcription Factor Buffer Set. This data was developed using the same antibody clone with 84135-2-PBS in a different storage buffer formulation.



1×10^6 BxPC-3 cells were intracellularly stained with 0.25 ug NELF-B Recombinant Antibody (84135-2-RR, Clone:241434C6) and APC-Conjugated Goat Anti-Rabbit IgG(H+L)(red), or 0.25 ug Isotype Control (blue). Cells were fixed and permeabilized with True-Nuclear Transcription Factor Buffer Set. This data was developed using the same antibody clone with 84135-2-PBS in a different storage buffer formulation.



Cytometric bead array standard curve of MP01055-2, NELF-B Recombinant Matched Antibody Pair, PBS Only. Capture antibody: 84135-2-PBS. Detection antibody: 84135-1-PBS. Standard: Ag9599. Range: 0.781-100 ng/mL.



Biolayer interferometry (BLI) kinetic assays of 84135-2-RR against Human NELF-B were performed. The affinity constant is below 1 pM.