

For Research Use Only

CD155/PVR Recombinant antibody, PBS Only (Detector)

Catalog Number: 84138-2-PBS



Basic Information

Catalog Number: 84138-2-PBS	GenBank Accession Number: BC015542	Purification Method: Protein A purification
Size: 1 mg/ml	GeneID (NCBI): 5817	CloneNo.: 241405D2
Source: Rabbit	UNIPROT ID: P15151	
Isotype: IgG	Full Name: poliovirus receptor	
	Calculated MW: 45 kDa	

Applications

Tested Applications:
Cytometric bead array, Sandwich ELISA, Indirect ELISA,
Sample test

Species Specificity:
human

Background Information

Storage

Storage:
Store at -80°C.
The product is shipped with ice packs. Upon receipt, store it immediately at -80°C

Storage Buffer:
PBS Only

For technical support and original validation data for this product please contact:

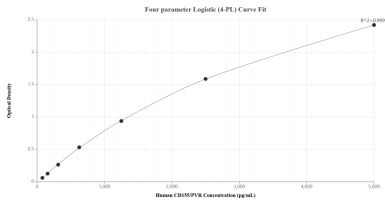
T: 4006900926

E: Proteintech-CN@ptglab.com

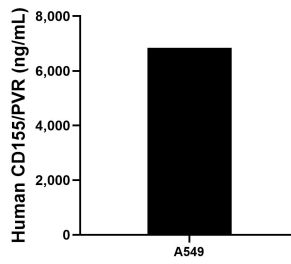
W: ptgcn.com

This product is exclusively available under Proteintech Group brand and is not available to purchase from any other manufacturer.

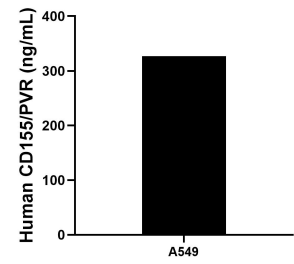
Selected Validation Data



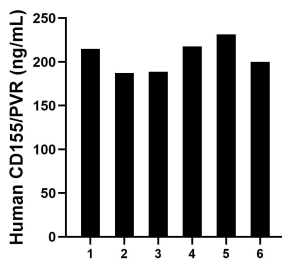
Sandwich ELISA standard curve of MP01053-4, Human CD155/PVR Recombinant Matched Antibody Pair - PBS only. 84138-6-PBS was coated to a plate as the capture antibody and incubated with serial dilutions of standard Eg0971. 84138-2-PBS was HRP conjugated as the detection antibody. Range: 78.1-5000 pg/mL



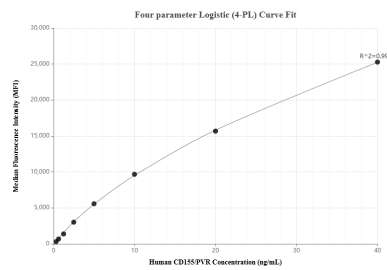
A549 were cultured in DMEM supplemented with 10% fetal bovine serum, 2.5 mM L-glutamine, 100 U/mL penicillin, and 100 µg/mL streptomycin sulfate. An aliquot of the cell culture supernate was removed, assayed for human CD155/PVR, and measured 6,841.2 pg/mL



The mean CD155/PVR concentration was determined to be 327.1 ng/mL in A549 cell extract based on a 2.5 mg/mL extract load.



Serum of six individual healthy human donors was measured. The CD155/PVR concentration of detected samples was determined to be 206.7 ng/mL with a range of 187.5-231.4 ng/mL



Cytometric bead array standard curve of MP01053-1, CD155/PVR Recombinant Matched Antibody Pair, PBS Only. Capture antibody: 84138-1-PBS. Detection antibody: 84138-2-PBS. Standard: Eg0971. Range: 0.313-40 ng/mL