

For Research Use Only

# CD155/PVR Recombinant antibody, PBS Only (Capture)

Catalog Number: 84138-6-PBS



## Basic Information

Catalog Number:

84138-6-PBS

Size:

1 mg/ml

Source:

Rabbit

Isotype:

IgG

GenBank Accession Number:

BC015542

GeneID (NCBI):

5817

UNIPROT ID:

P15151

Full Name:

poliovirus receptor

Calculated MW:

45 kDa

Purification Method:

Protein A purification

CloneNo.:

241405F7

## Applications

Tested Applications:

Sandwich ELISA, Indirect ELISA, Sample test

Species Specificity:

human

## Background Information

### Storage

Storage:

Store at -80°C.

The product is shipped with ice packs. Upon receipt, store it immediately at -80°C

Storage Buffer:

PBS Only

For technical support and original validation data for this product please contact:

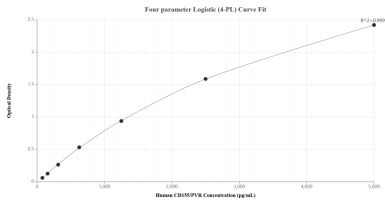
T: 4006900926

E: Proteintech-CN@ptglab.com

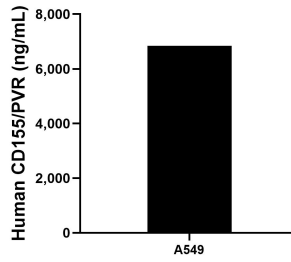
W: ptgcn.com

This product is exclusively available under Proteintech Group brand and is not available to purchase from any other manufacturer.

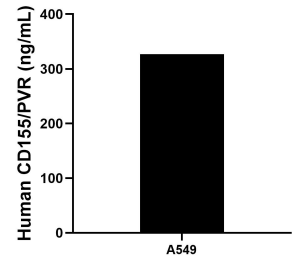
## Selected Validation Data



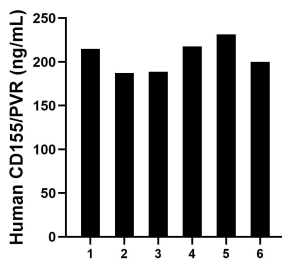
Sandwich ELISA standard curve of MP01053-4, Human CD155/PVR Recombinant Matched Antibody Pair - PBS only. 84138-6-PBS was coated to a plate as the capture antibody and incubated with serial dilutions of standard Eg0971. 84138-2-PBS was HRP conjugated as the detection antibody. Range: 78.1-5000 pg/mL



A549 were cultured in DMEM supplemented with 10% fetal bovine serum, 2.5 mM L-glutamine, 100 U/mL penicillin, and 100 µg/mL streptomycin sulfate. An aliquot of the cell culture supernate was removed, assayed for human CD155/PVR, and measured 6,841.2 pg/mL



The mean CD155/PVR concentration was determined to be 327.1 ng/mL in A549 cell extract based on a 2.5 mg/mL extract load.



Serum of six individual healthy human donors was measured. The CD155/PVR concentration of detected samples was determined to be 206.7 ng/mL with a range of 187.5-231.4 ng/mL