

For Research Use Only

# ATG4C Recombinant antibody

Catalog Number: 84146-1-RR



## Basic Information

Catalog Number:

84146-1-RR

Size:

1000 ug/ml

Source:

Rabbit

Isotype:

IgG

Immunogen Catalog Number:

AG14207

GenBank Accession Number:

BC033024

GeneID (NCBI):

84938

UNIPROT ID:

Q96DT6

Full Name:

ATG4 autophagy related 4 homolog C  
(S. cerevisiae)

Calculated MW:

458 aa, 52 kDa

Observed MW:

52-55 kDa

Purification Method:

Protein A purification

CloneNo.:

230359A4

Recommended Dilutions:

WB 1:500-1:2000

## Applications

Tested Applications:

WB, ELISA

Species Specificity:

human

Positive Controls:

WB : HEK-293 cells, K-562 cells, Jurkat cells

## Background Information

Autophagy related 4C cysteine peptidase (ATG4C) is an autophagy regulator responsible for cleaving of pro-LC3 and delipidation of LC3 II.

## Storage

Storage:

Store at -20°C. Stable for one year after shipment.

Storage Buffer:

PBS with 0.02% sodium azide and 50% glycerol pH 7.3.

Aliquoting is unnecessary for -20°C storage

For technical support and original validation data for this product please contact:

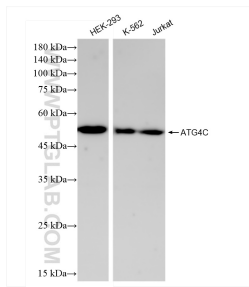
T: 4006900926

E: [Proteintech-CN@ptglab.com](mailto:Proteintech-CN@ptglab.com)

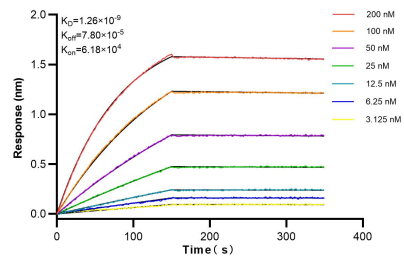
W: [ptgcn.com](http://ptgcn.com)

This product is exclusively available under Proteintech Group brand and is not available to purchase from any other manufacturer.

## Selected Validation Data



Various lysates were subjected to SDS PAGE followed by western blot with 84146-1-RR (ATG4C antibody) at dilution of 1:1000 incubated at room temperature for 1.5 hours.



Biolayer interferometry (BLI) kinetic assays of 84146-1-RR against Human ATG4C were performed. The affinity constant is 1.26 nM.