

For Research Use Only

# UCH-L1/PGP9.5 Recombinant antibody, PBS Only (Capture)

Catalog Number: 84154-2-PBS



## Basic Information

Catalog Number:

84154-2-PBS

Size:

1 mg/ml

Source:

Rabbit

Isotype:

IgG

Immunogen Catalog Number:

AG6490

GenBank Accession Number:

BC000332

GeneID (NCBI):

7345

UNIPROT ID:

P09936

Full Name:

ubiquitin carboxyl-terminal esterase  
L1 (ubiquitin thiolesterase)

Calculated MW:

25 kDa

Purification Method:

Protein A purification

CloneNo.:

241107C5

## Applications

Tested Applications:

Cytometric bead array, Sandwich ELISA, Indirect ELISA,  
Sample test

Species Specificity:

human

## Background Information

### Storage

Storage:

Store at -80°C.

**The product is shipped with ice packs. Upon receipt, store it immediately at -80°C**

Storage Buffer:

PBS Only

For technical support and original validation data for this product please contact:

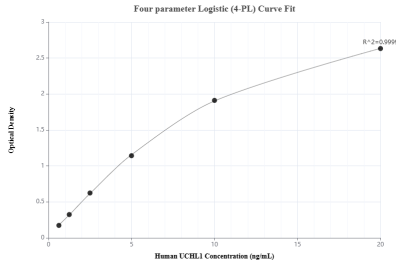
T: 4006900926

E: [Proteintech-CN@ptglab.com](mailto:Proteintech-CN@ptglab.com)

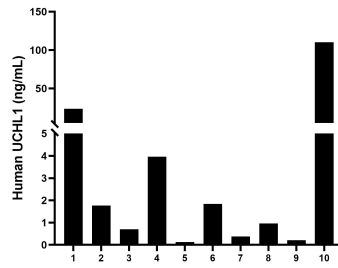
W: [ptgcn.com](http://ptgcn.com)

**This product is exclusively available under Proteintech Group brand and is not available to purchase from any other manufacturer.**

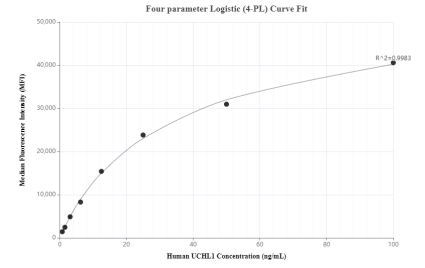
## Selected Validation Data



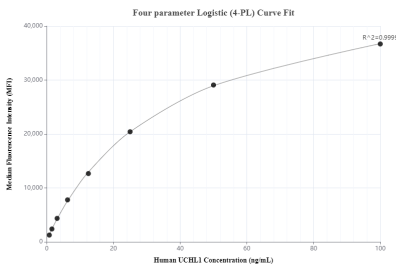
Sandwich ELISA standard curve of MP01079-2, Human UCHL1 Recombinant Matched Antibody Pair - PBS only. 84154-2-PBS was coated to a plate as the capture antibody and incubated with serial dilutions of standard Ag6490. 84154-3-PBS was HRP conjugated as the detection antibody. Range: 0.625-20 ng/mL



Serum of ten individual healthy human donors was measured. The human UCHL1 concentration of detected samples was determined to be 8.99 ng/mL with a range of 0.13 - 110.20 ng/mL.



Cytometric bead array standard curve of MP01079-1, UCHL1 Recombinant Matched Antibody Pair, PBS Only. Capture antibody: 84154-2-PBS. Detection antibody: 84154-1-PBS. Standard: Ag6490. Range: 0.781-100 ng/mL



Cytometric bead array standard curve of MP01079-2, UCHL1 Recombinant Matched Antibody Pair, PBS Only. Capture antibody: 84154-2-PBS. Detection antibody: 84154-3-PBS. Standard: Ag6490. Range: 0.781-100 ng/mL