

For Research Use Only

UCH-L1/PGP9.5 Recombinant antibody, PBS Only (Capture/Detector)

Catalog Number: 84154-3-PBS



Basic Information

Catalog Number: 84154-3-PBS	GenBank Accession Number: BC000332	Purification Method: Protein A purification
Size: 1 mg/ml	GeneID (NCBI): 7345	CloneNo.: 241107G1
Source: Rabbit	UNIPROT ID: P09936	
Isotype: IgG	Full Name: ubiquitin carboxyl-terminal esterase L1 (ubiquitin thiolesterase)	
Immunogen Catalog Number: AG6490	Calculated MW: 25 kDa	

Applications

Tested Applications:
Cytometric bead array, Sandwich ELISA, Indirect ELISA,
Sample test

Species Specificity:
human

Background Information

Storage

Storage:
Store at -80°C.
The product is shipped with ice packs. Upon receipt, store it immediately at -80°C

Storage Buffer:
PBS Only

For technical support and original validation data for this product please contact:

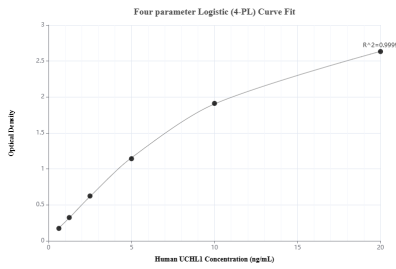
T: 4006900926

E: Proteintech-CN@ptglab.com

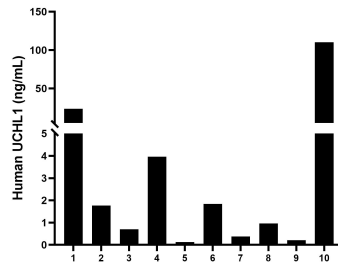
W: ptgcn.com

This product is exclusively available under Proteintech Group brand and is not available to purchase from any other manufacturer.

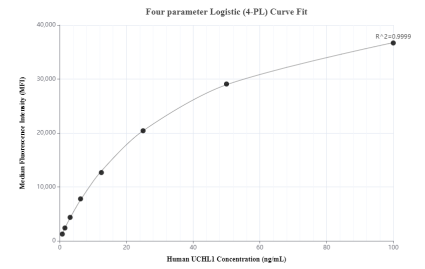
Selected Validation Data



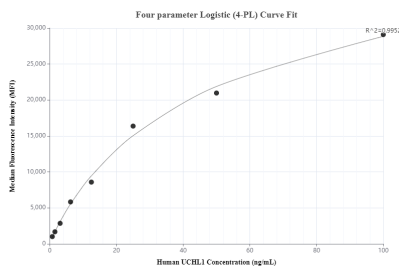
Sandwich ELISA standard curve of MP01079-2, Human UCHL1 Recombinant Matched Antibody Pair - PBS only. 84154-2-PBS was coated to a plate as the capture antibody and incubated with serial dilutions of standard Ag6490. 84154-3-PBS was HRP conjugated as the detection antibody. Range: 0.625-20 ng/mL



Serum of ten individual healthy human donors was measured. The human UCHL1 concentration of detected samples was determined to be 8.99 ng/mL with a range of 0.13 - 110.20 ng/mL.



Cytometric bead array standard curve of MP01079-2, UCHL1 Recombinant Matched Antibody Pair, PBS Only. Capture antibody: 84154-2-PBS. Detection antibody: 84154-3-PBS. Standard: Ag6490. Range: 0.781-100 ng/mL



Cytometric bead array standard curve of MP01079-3, UCHL1 Recombinant Matched Antibody Pair, PBS Only. Capture antibody: 84154-3-PBS. Detection antibody: 84154-1-PBS. Standard: Ag6490. Range: 0.781-100 ng/mL