

For Research Use Only

# PPP2CA Recombinant antibody, PBS Only

Catalog Number: 84155-5-PBS



## Basic Information

<b>Catalog Number:</b> 84155-5-PBS	<b>GenBank Accession Number:</b> BC031696	<b>Purification Method:</b> Protein A purification
<b>Size:</b> 1 mg/ml	<b>GeneID (NCBI):</b> 5515	<b>CloneNo.:</b> 241112B8
<b>Source:</b> Rabbit	<b>UNIPROT ID:</b> P67775	
<b>Isotype:</b> IgG	<b>Full Name:</b> protein phosphatase 2 (formerly 2A), catalytic subunit, alpha isoform	
<b>Immunogen Catalog Number:</b> AG4294	<b>Calculated MW:</b> 309 aa, 36 kDa	
	<b>Observed MW:</b> 36 kDa	

## Applications

**Tested Applications:**  
WB, Indirect ELISA

**Species Specificity:**  
human

## Background Information

PPP2CA, also named as RP-C and PP2A-alpha, belongs to the PPP phosphatase family and PP-1 subfamily. PP2A can modulate the activity of phosphorylase B kinase casein kinase 2, mitogen-stimulated S6 kinase, and MAP-2 kinase. PP2A activity was modestly decreased in AML patients harboring C-KIT/WT. PP2A is a target for C-KIT/TKD and implicated the potential efficacy of therapies targeting PP2A in such AML in future.

## Storage

**Storage:**  
Store at -80°C.  
**The product is shipped with ice packs. Upon receipt, store it immediately at -80°C**

**Storage Buffer:**  
PBS Only

For technical support and original validation data for this product please contact:

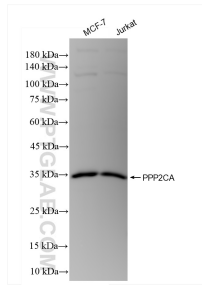
T: 4006900926

E: [Proteintech-CN@ptglab.com](mailto:Proteintech-CN@ptglab.com)

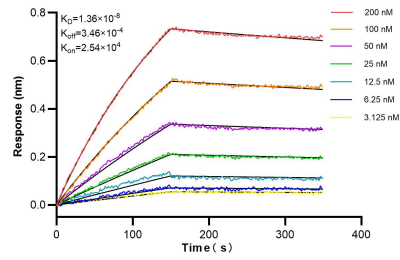
W: [ptgcn.com](http://ptgcn.com)

**This product is exclusively available under Proteintech Group brand and is not available to purchase from any other manufacturer.**

## Selected Validation Data



Various lysates were subjected to SDS PAGE followed by western blot with 84155-5-RR (PPP2CA antibody) at dilution of 1:5000 incubated at room temperature for 1.5 hours. This data was developed using the same antibody clone with 84155-5-PBS in a different storage buffer formulation.



Biolayer interferometry (BLI) kinetic assays of 84155-5-RR against Human PPP2CA were performed. The affinity constant is 13.6 nM.