

For Research Use Only

PPP2CA Recombinant antibody, PBS Only

Catalog Number: 84155-6-PBS



Basic Information

Catalog Number:

84155-6-PBS

Size:

1 mg/ml

Source:

Rabbit

Isotype:

IgG

Immunogen Catalog Number:

AG4294

GenBank Accession Number:

BC031696

GeneID (NCBI):

5515

UNIPROT ID:

P67775

Full Name:

protein phosphatase 2 (formerly 2A), catalytic subunit, alpha isoform

Calculated MW:

309 aa, 36 kDa

Purification Method:

Protein A purification

CloneNo.:

241112F3

Applications

Tested Applications:

IF/ICC, FC (Intra), Indirect ELISA

Species Specificity:

human

Background Information

PPP2CA, also named as RP-C and PP2A-alpha, belongs to the PPP phosphatase family and PP-1 subfamily. PP2A can modulate the activity of phosphorylase B kinase casein kinase 2, mitogen-stimulated S6 kinase, and MAP-2 kinase. PP2A activity was modestly decreased in AML patients harboring C-KIT/WT. PP2A is a target for C-KIT/TKD and implicated the potential efficacy of therapies targeting PP2A in such AML in future.

Storage

Storage:

Store at -80°C.

The product is shipped with ice packs. Upon receipt, store it immediately at -80°C

Storage Buffer:

PBS Only

For technical support and original validation data for this product please contact:

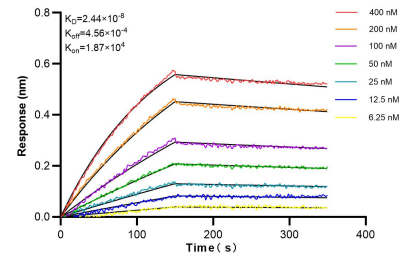
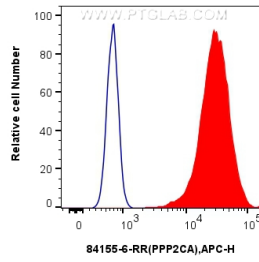
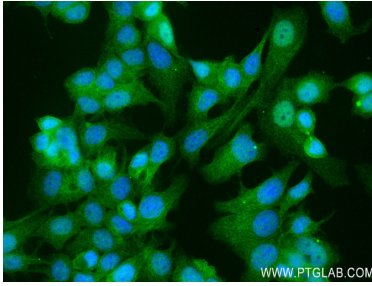
T: 4006900926

E: Proteintech-CN@ptglab.com

W: ptgcn.com

This product is exclusively available under Proteintech Group brand and is not available to purchase from any other manufacturer.

Selected Validation Data



Immunofluorescent analysis of (4% PFA) fixed MCF-7 cells using PPP2CA antibody (84155-6-RR, Clone: 241112F3) at dilution of 1:100 and CoraLite@488-Conjugated Goat Anti-Rabbit IgG(H+L) (SA00013-2). This data was developed using the same antibody clone with 84155-6-PBS in a different storage buffer formulation.

1×10^6 HeLa cells were intracellularly stained with 0.25 μ g PPP2CA Recombinant antibody (84155-6-RR, Clone:241112F3) and APC-Conjugated Goat Anti-Rabbit IgG(H+L)(red), or 0.25 μ g Isotype Control (blue). Cells were fixed with 4% PFA and permeabilized with Flow Cytometry Perm Buffer (PF00011-C). This data was developed using the same antibody clone with 84155-6-PBS in a different storage buffer formulation.

Bi-layer interferometry (BLI) kinetic assays of 84155-6-RR against Human PPP2CA were performed. The affinity constant is 24.4 nM.