

For Research Use Only

# SYNGR1 Recombinant antibody

Catalog Number: 84161-3-RR



## Basic Information

|  |  |   |
|--|--|---|
| <b>Catalog Number:</b><br>84161-3-RR       | <b>GenBank Accession Number:</b><br>BC000731 | <b>Purification Method:</b><br>Protein A purification                 |
| <b>Size:</b><br>1000 µg/ml                 | <b>GeneID (NCBI):</b><br>9145                | <b>CloneNo.:</b><br>241460D1  |
| <b>Source:</b><br>Rabbit                   | <b>UNIPROT ID:</b><br>O43759                 | <b>Recommended Dilutions:</b><br>WB 1:5000-1:50000<br>IF-P 1:50-1:500 |
| <b>Isotype:</b><br>IgG                     | <b>Full Name:</b><br>synaptogyrin 1          |   |
| <b>Immunogen Catalog Number:</b><br>AG0685 | <b>Calculated MW:</b><br>25 kDa              |   |
|  | <b>Observed MW:</b><br>30 kDa                |   |

## Applications

|   |   |
|---|---|
| <b>Tested Applications:</b><br>WB, ELISA              | <b>Positive Controls:</b>   |
| <b>Species Specificity:</b><br>human, mouse, rat, pig | <b>WB :</b> mouse brain tissue, pig brain tissue, rat brain tissue<br><b>IF-P :</b> mouse brain tissue, |

## Background Information

Synaptogyrins are one of the most abundant vesicle components and are involved in the regulation of neurotransmitter release and synaptic plasticity. Synaptogyrins comprise a family of tyrosine-phosphorylated proteins with three isoforms: two neuronal forms (synaptogyrin-1 and -3) and one ubiquitous form (synaptogyrin-2). The synaptogyrin 1 (SYNGR1) can act as a regulator of Ca<sup>2+</sup>-dependent exocytosis. SYNGR1 protein mutations are associated with schizophrenia and are considered to be positional candidate genes for schizophrenia. (PMID: 10383386; 10595519; 14755516; 14732601; 17049558)

## Storage

**Storage:**  
Store at -20°C. Stable for one year after shipment.  
**Storage Buffer:**  
PBS with 0.02% sodium azide and 50% glycerol pH 7.3.  
Aliquoting is unnecessary for -20°C storage

For technical support and original validation data for this product please contact:

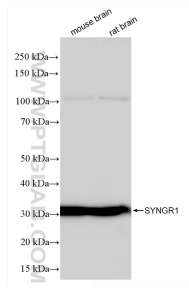
T: 4006900926

E: [Proteintech-CN@ptglab.com](mailto:Proteintech-CN@ptglab.com)

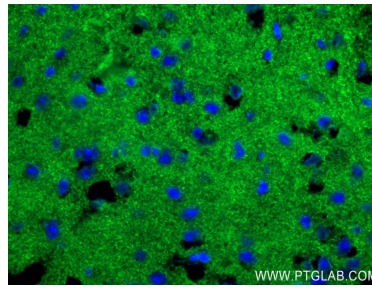
W: [ptgcn.com](http://ptgcn.com)

**This product is exclusively available under Proteintech Group brand and is not available to purchase from any other manufacturer.**

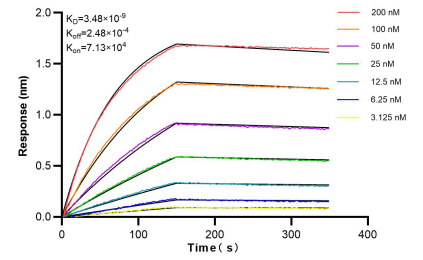
## Selected Validation Data



Various lysates were subjected to SDS PAGE followed by western blot with 84161-3-RR (SYNGR1 antibody) at dilution of 1:10000 incubated at room temperature for 1.5 hours.



Immunofluorescent analysis of (4% PFA) fixed mouse brain tissue using SYNGR1 antibody (84161-3-RR, Clone: 241460D1) at dilution of 1:200 and CoraLite®488-Conjugated Goat Anti-Rabbit IgG(H+L) (SA00013-2).



Bi-layer interferometry (BLI) kinetic assays of 84161-3-RR against Human SYNGR1 were performed. The affinity constant is 3.48 nM.