

For Research Use Only

CHRNA4 Recombinant antibody, PBS Only (Capture/Detector)

Catalog Number: 84168-1-PBS



Basic Information

Catalog Number: 84168-1-PBS	GenBank Accession Number: BC096290	Purification Method: Protein A purification
Size: 1 mg/ml	GeneID (NCBI): 1137	CloneNo.: 241492A6
Source: Rabbit	UNIPROT ID: P43681	
Isotype: IgG	Full Name: cholinergic receptor, nicotinic, alpha 4	
Immunogen Catalog Number: AG16584	Calculated MW: 627 aa, 70 kDa	

Applications

Tested Applications:
Cytometric bead array, Sandwich ELISA, Indirect ELISA, Sample test

Species Specificity:
human

Background Information

Storage

Storage:
Store at -80°C.
The product is shipped with ice packs. Upon receipt, store it immediately at -80°C

Storage Buffer:
PBS Only

For technical support and original validation data for this product please contact:

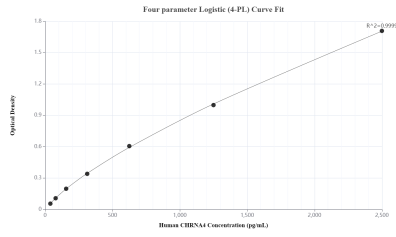
T: 4006900926

E: Proteintech-CN@ptglab.com

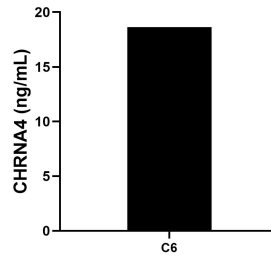
W: ptgcn.com

This product is exclusively available under Proteintech Group brand and is not available to purchase from any other manufacturer.

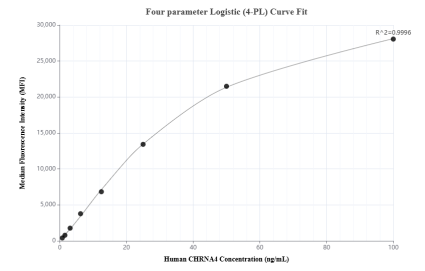
Selected Validation Data



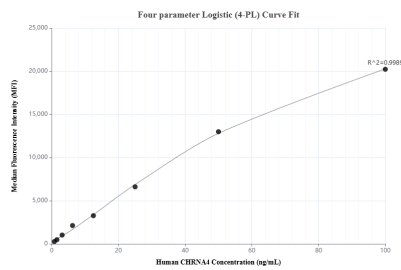
Sandwich ELISA standard curve of MP01101-4, Human CHRNA4 Recombinant Matched Antibody Pair - PBS only. 84168-1-PBS was coated to a plate as the capture antibody and incubated with serial dilutions of standard Ag16584. 84168-3-PBS was HRP conjugated as the detection antibody. Range: 39.1-2500 pg/mL



The mean CHRNA4 concentration was determined to be 18.6 ng/mL in C6 cell extract based on a 4.9 mg/mL extract load.



Cytometric bead array standard curve of MP01101-1, CHRNA4 Recombinant Matched Antibody Pair, PBS Only. Capture antibody: 84168-3-PBS. Detection antibody: 84168-1-PBS. Standard: Ag16584. Range: 0.781-100 ng/mL



Cytometric bead array standard curve of MP01101-3, CHRNA4 Recombinant Matched Antibody Pair, PBS Only. Capture antibody: 84168-1-PBS. Detection antibody: 84168-4-PBS. Standard: Ag16584. Range: 0.781-100 ng/mL