

For Research Use Only

GEMIN5 Recombinant antibody

Catalog Number: 84171-3-RR



Basic Information

Catalog Number: 84171-3-RR	GenBank Accession Number: BC113614	Purification Method: Protein A purification
Size: 1000 µg/ml	GeneID (NCBI): 25929	CloneNo.: 241205D8
Source: Rabbit	UNIPROT ID: Q8TEQ6	Recommended Dilutions: WB 1:5000-1:50000 IF/ICC 1:125-1:500
Isotype: IgG	Full Name: gem (nuclear organelle) associated protein 5	
Immunogen Catalog Number: AG19220	Calculated MW: 1508 aa, 169 kDa	

Applications

Tested Applications: IF/ICC, ELISA	Positive Controls:
Species Specificity: human	WB : HEK-293 cells, HeLa cells, Jurkat cells, HepG2 cells, COLO 320 cells IF/ICC : HeLa cells,

Background Information

GEMIN5 also named as Gem associated protein 5 is a 1508 amino-acid protein, which belongs to the WD repeat gemin-5 family. The molecular weight of GEMIN5 is 168 kDa. GEMIN5 is a component of SMN complex, which plays an essential role in spliceosomal snRNP assembly in the cytoplasm and is required for pre-mRNA splicing in the nucleus. GEMIN5 is identified as the factor that allows the SMN complex to distinguish snRNAs from other cellular RNAs for snRNP biogenesis. GEMIN5 is found in nucleoplasm, nuclear bodies and cytoplasm.

Storage

Storage:
Store at -20°C. Stable for one year after shipment.
Storage Buffer:
PBS with 0.02% sodium azide and 50% glycerol pH 7.3.
Aliquoting is unnecessary for -20°C storage

For technical support and original validation data for this product please contact:

T: 4006900926

E: Proteintech-CN@ptglab.com

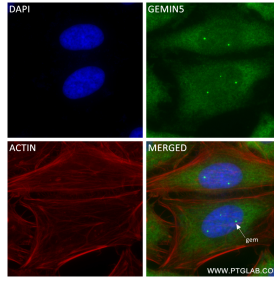
W: ptgcn.com

This product is exclusively available under Proteintech Group brand and is not available to purchase from any other manufacturer.

Selected Validation Data



Various lysates were subjected to SDS PAGE followed by western blot with 84171-3-RR (GEMIN5 antibody) at dilution of 1:10000 incubated at room temperature for 1.5 hours.



Immunofluorescent analysis of (4% PFA) fixed HeLa cells using GEMIN5 antibody (84171-3-RR, Clone: 241205D8) at dilution of 1:250 and CoraLite®488-Conjugated Goat Anti-Rabbit IgG(H+L) (SA00013-2), CL594-Phalloidin (red).