

For Research Use Only

GEMIN5 Recombinant antibody, PBS Only

Catalog Number: 84171-5-PBS



Basic Information

Catalog Number: 84171-5-PBS	GenBank Accession Number: BC113614	Purification Method: Protein A purification
Size: 1 mg/ml	GeneID (NCBI): 25929	CloneNo.: 241205G7
Source: Rabbit	UNIPROT ID: Q8TEQ6	
Isotype: IgG	Full Name: gem (nuclear organelle) associated protein 5	
Immunogen Catalog Number: AG19220	Calculated MW: 1508 aa, 169 kDa	
	Observed MW: 168-180 kDa	

Applications

Tested Applications:
WB, IF/ICC, FC (Intra), Indirect ELISA

Species Specificity:
human

Background Information

GEMIN5 also named as Gem associated protein 5 is a 1508 amino-acid protein, which belongs to the WD repeat gemin-5 family. The molecular weight of GEMIN5 is 168 kDa. GEMIN5 is a component of SMN complex, which plays an essential role in spliceosomal snRNP assembly in the cytoplasm and is required for pre-mRNA splicing in the nucleus. GEMIN5 is identified as the factor that allows the SMN complex to distinguish snRNAs from other cellular RNAs for snRNP biogenesis. GEMIN5 is found in nucleoplasm, nuclear bodies and cytoplasm.

Storage

Storage:
Store at -80°C.
The product is shipped with ice packs. Upon receipt, store it immediately at -80°C

Storage Buffer:
PBS Only

For technical support and original validation data for this product please contact:

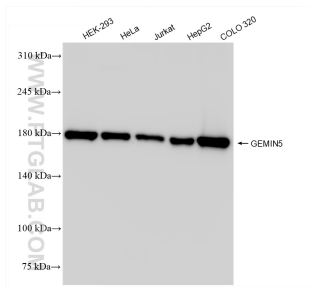
T: 4006900926

E: Proteintech-CN@ptglab.com

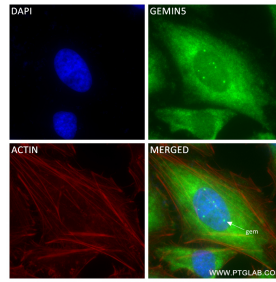
W: ptgcn.com

This product is exclusively available under Proteintech Group brand and is not available to purchase from any other manufacturer.

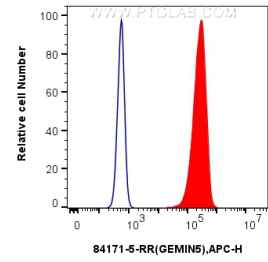
Selected Validation Data



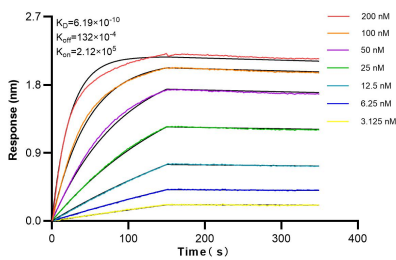
Various lysates were subjected to SDS PAGE followed by western blot with 84171-5-RR (GEMIN5 antibody) at dilution of 1:10000 incubated at room temperature for 1.5 hours. This data was developed using the same antibody clone with 84171-5-PBS in a different storage buffer formulation.



Immunofluorescent analysis of (4% PFA) fixed HeLa cells using GEMIN5 antibody (84171-5-RR, Clone: 241205G7) at dilution of 1:250 and CoraLite®488-Conjugated Goat Anti-Rabbit IgG(H+L) (SA00013-2), CL594-Phalloidin (red). This data was developed using the same antibody clone with 84171-5-PBS in a different storage buffer formulation.



1×10^6 HEK-293 cells were intracellularly stained with 0.25 ug GEMIN5 Recombinant antibody (84171-5-RR, Clone:241205G7) and APC-Conjugated Goat Anti-Rabbit IgG(H+L)(red), or 0.25 ug Isotype Control (blue). Cells were fixed with 4% PFA and permeabilized with Flow Cytometry Perm Buffer (PF00011-C). This data was developed using the same antibody clone with 84171-5-PBS in a different storage buffer formulation.



Biolayer interferometry (BLI) kinetic assays of 84171-5-RR against Human GEMIN5 were performed. The affinity constant is 0.619 nM.